

APP CRS	Rwy Idg	<b>5003</b>
<b>011°</b>	TDZE	<b>62</b>
	Apt Elev	<b>62</b>

# RNAV (GPS) RWY 1

JACKSON MUNI (4R3)

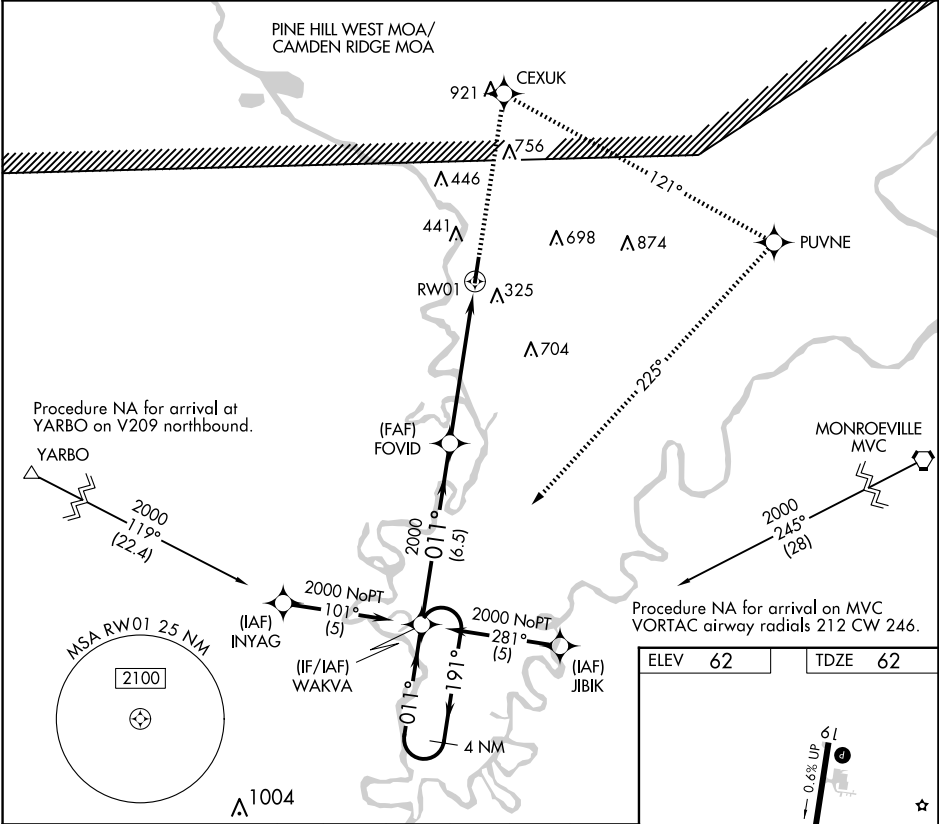
RNP APCH.

▼ Procedure NA at night. Rwy 1 helicopter visibility reduction below 1 SM NA. Use Evergreen altimeter setting, when not received, use Mobile Rgnl altimeter setting and increase all MDA 20 feet.

▲ NA

MISSED APPROACH: Climb to 2000 direct CEXUK and right turn on track 121° to PUVNE and right turn on track 225° to WAKVA and hold.

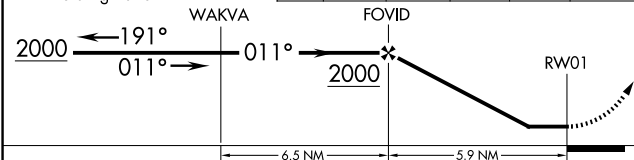
GZH ASOS	HOUSTON CENTER	CTAF
<b>133.425</b>	<b>127.65 285.475</b>	<b>122.90</b>



Visual Segment - Obstacles.

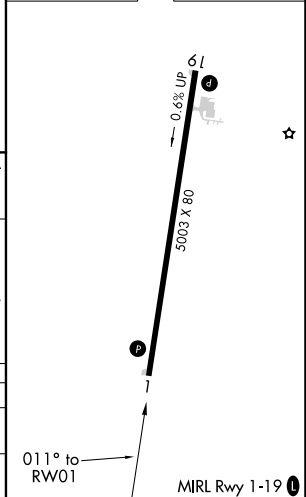
2000	CEXUK	PUVNE	WAKVA
↑	✦	↻ tr 121°	↻ tr 225°

4 NM Holding Pattern



CATEGORY	A	B	C	D
LNVA MDA	900-1 838 (900-1)	900-1¼ 838 (900-1¼)	900-2½ 838 (900-2½)	900-2¾ 838 (900-2¾)
CIRCLING	980-1 ¼	918 (1000-1¼)	980-2¾ 918 (1000-2¾)	1140-3 1078 (1100-3)

ELEV 62	TDZE 62
---------	---------



SE-4, 11 JUN 2026 to 09 JUL 2026

SE-4, 11 JUN 2026 to 09 JUL 2026