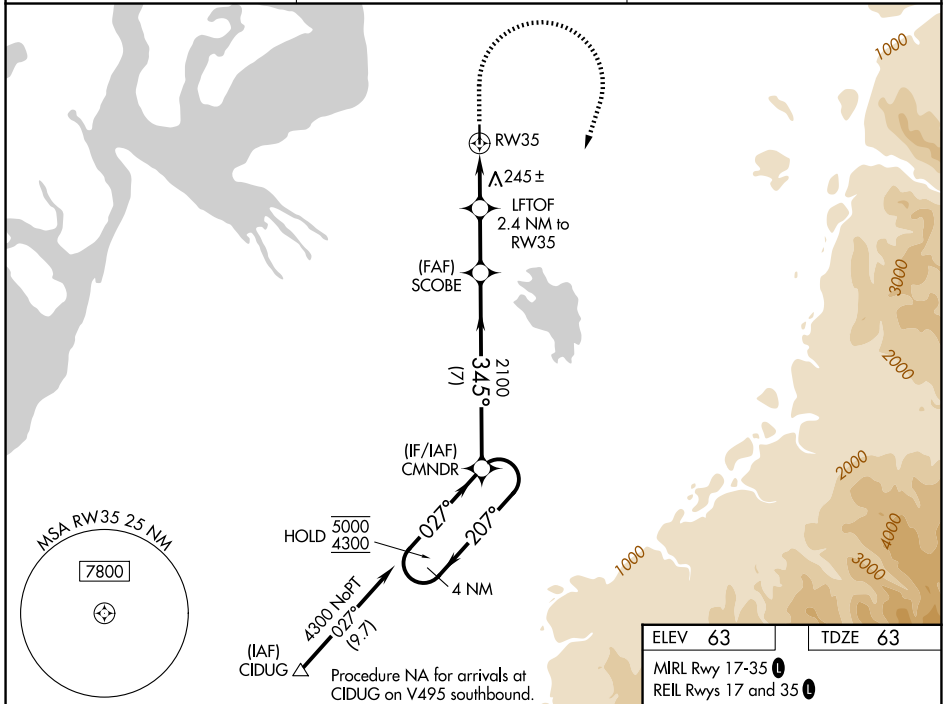


WAAS CH 50346 W35A	APP CRS 345°	Rwy Ldg 3601 TDZE 63 Apt Elev 63
--	------------------------	---

RNAV (GPS) RWY 35

AUBURN MUNI (S5 \emptyset)

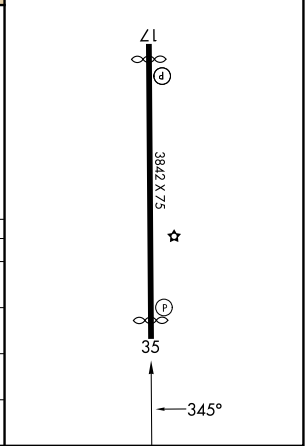
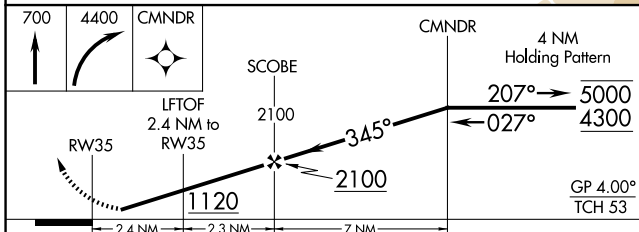
RNP APCH - GPS.		MISSED APPROACH: Climb to 700 then climbing right turn to 4400 direct CMNDR and hold, continue climb-in-hold to 4400.
<p>▽ Circling NA west of Rwy 17-35. Baro-VNAV NA. Rwy 35 helicopter visibility reduction below 1 SM NA. Circling Rwy 17 NA at night. Use Seattle-Tacoma Intl altimeter setting.</p>		
SEA ASOS 118.0	SEATTLE APP CON 123.85	UNICOM 122.975 (CTAF) \emptyset



NW-1, 11 JUN 2026 to 09 JUL 2026

NW-1, 11 JUN 2026 to 09 JUL 2026

ELEV 63	TDZE 63
MIRL Rwy 17-35 \emptyset REIL Rwys 17 and 35 \emptyset	



CATEGORY	A	B	C	D
LPV DA	459-1 $\frac{1}{8}$	396 (400-1 $\frac{1}{8}$)		NA
LNAV/VNAV DA	702-1 $\frac{3}{4}$	639 (700-1 $\frac{3}{4}$)		NA
LNAV MDA	740-1	677 (700-1)		NA
CIRCLING	920-1 $\frac{1}{4}$ 857 (900-1 $\frac{1}{4}$)	1040-1 $\frac{1}{2}$ 977 (1000-1 $\frac{1}{2}$)		NA