

| | | | |
|--|------------------------|---|-------------|
| WAAS CH 40308 W16A | APP CRS 156° | Rwy Ldg TDZE 686 Apt Elev 686 | 3998 |
|--|------------------------|---|-------------|

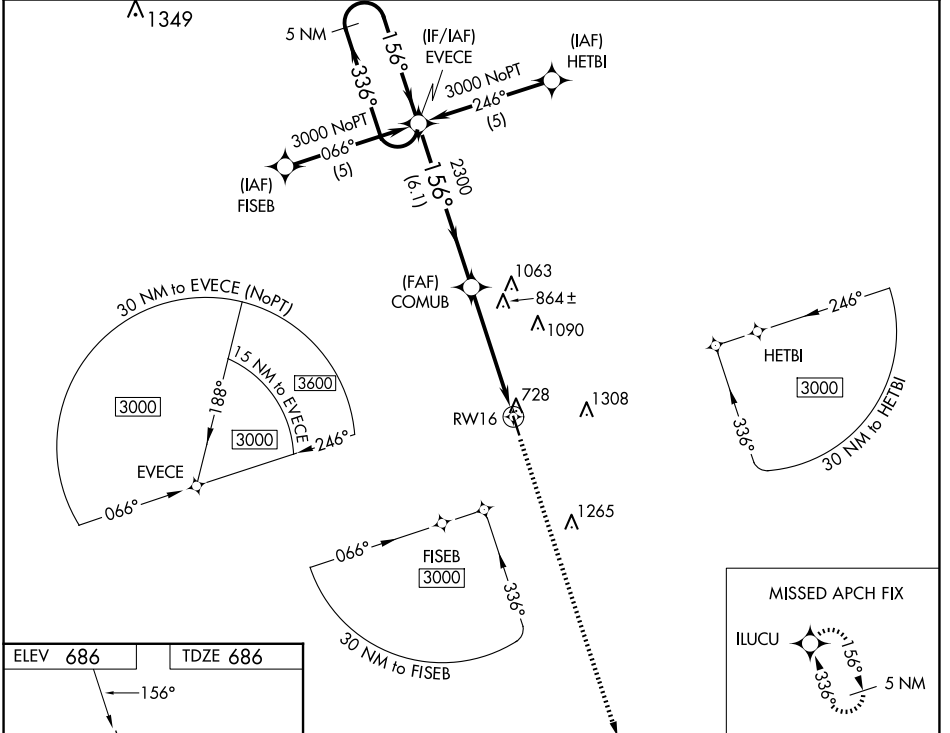
RNAV (GPS) RWY 16

HILLSBORO MUNI (INJ)

⚠ Baro-VNAV NA when using Cleburne Rgnl altimeter setting. DME/DME RNP-0.3 NA. For uncompensated Baro-VNAV systems, LNAV/VNAV NA below -16°C (4°F) or above 54°C (130°F). Visibility reduction by helicopters NA. When local altimeter setting not received use Cleburne Rgnl altimeter setting and increase all DA/MDA 80 feet, increase LPV and LNAV/VNAV visibility 1/4 mile all Cats.

MISSED APPROACH: Climb to 3000 direct ILUCU and hold.

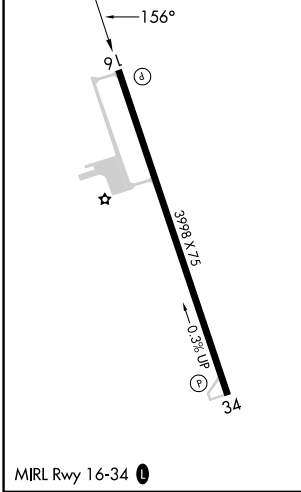
| | | |
|----------------------------|---------------------------------------|-----------------------|
| AWOS-3PT 118.725 | WACO APP CON ★ 127.65 352.0 | CTAF 122.90 |
|----------------------------|---------------------------------------|-----------------------|



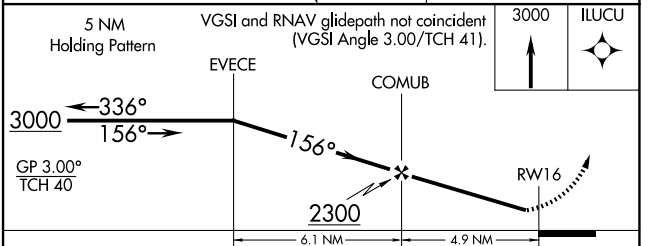
SC-2, 11 JUN 2026 to 09 JUL 2026

SC-2, 11 JUN 2026 to 09 JUL 2026

| | |
|-----------------|-----------------|
| ELEV 686 | TDZE 686 |
|-----------------|-----------------|



MIRL Rwy 16-34 **Ⓛ**
HILLSBORO, TEXAS
Amdt 1 25SEP08



| CATEGORY | A | B | C | D |
|--------------|-------------|-----------------|---|----|
| LPV DA | 936-1 | 250 (300-1) | | NA |
| LNAV/VNAV DA | 1128-1 1/2 | 442 (500-1 1/2) | | NA |
| LNAV MDA | 1120-1 | 434 (500-1) | | NA |
| CIRCLING | 1180-1 | 1200-1 | | NA |
| | 494 (500-1) | 514 (600-1) | | |