

APP CRS <b>092°</b>	Rwy Ldg TDZE Apt Elev	<b>N/A</b> <b>N/A</b> <b>200</b>
------------------------	-----------------------------	--

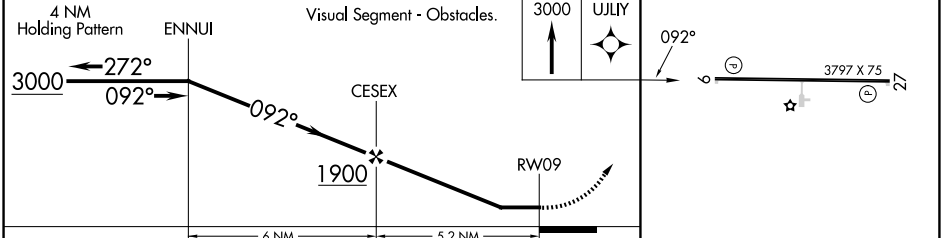
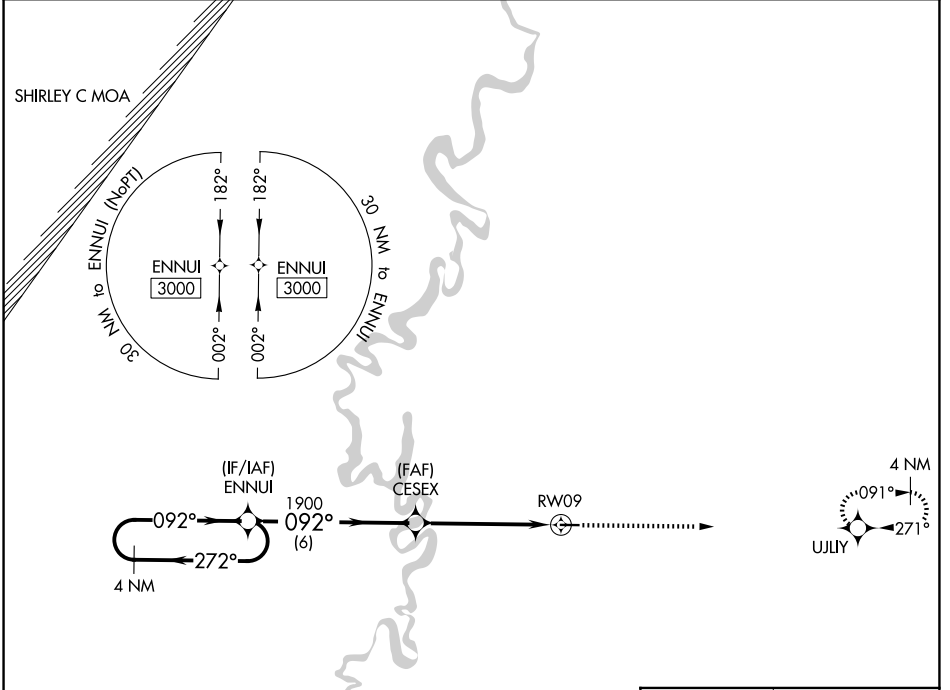
# RNAV (GPS)-A

WOODRUFF COUNTY (M64)

**NA** Rwy 9, 27 helicopter visibility reduction below 1 SM NA. DME/DME RNP-0.3 NA. Procedure NA at night. Use Newport altimeter setting.

MISSED APPROACH: Climb to 3000 direct UJLY and hold.

M19 AWOS-3PT <b>118.15</b>	MEMPHIS CENTER <b>135.3 335.8</b>	CTAF <b>122.9 0</b>
-------------------------------	--------------------------------------	------------------------



CATEGORY	A	B	C	D
CIRCLING	740-1 540 (600-1)	820-1 620 (700-1)	NA	

SC-1, 11 JUN 2026 to 09 JUL 2026

SC-1, 11 JUN 2026 to 09 JUL 2026

MIRL Rwy 9-27 0