

| | | | |
|--|------------------------|-----------------------------|---|
| WAAS CH 90116 W01A | APP CRS 013° | Rwy Ldg TDZE Apt Elev | 6000 467 488 |
|--|------------------------|-----------------------------|---|

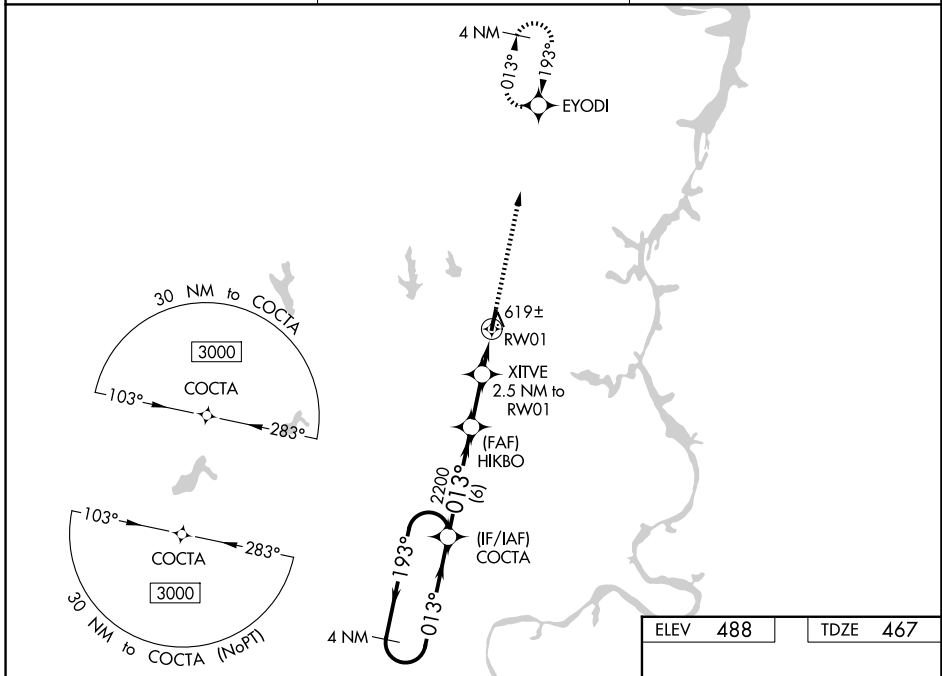
RNAV (GPS) RWY 1

BEECH RIVER RGNL (PVE)

⚠ For uncompensated Baro-VNAV systems, LNAV/VNAV NA below -15°C (5° F) or above 54°C (130°F).
⚠ DME/DMÉ RNP-0.3 NA. When local altimeter setting not received, use Jackson altimeter setting; increase LPV all Cats DA to 807 and all Cats visibility 3/8 mile; increase LNAV/VNAV all Cats DA to 911 and all Cats visibility 3/8 mile; increase all MDA 100 feet and LNAV Cats C/D and Circling Cat C visibility 1/2 mile and Circling Cat D visibility 1/2 mile. Baro-VNAV and VDP NA when using Jackson altimeter setting.

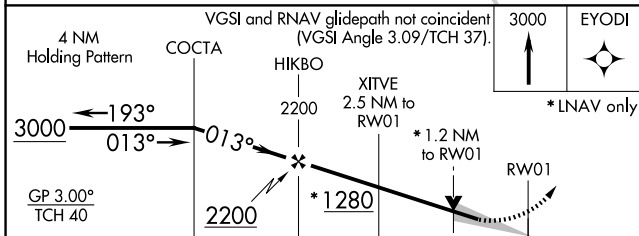
MISSED APPROACH:
Climb to 3000 direct EYODI and hold.

| | | |
|---------------------------------|---|--|
| AWOS-3 118.125 | MEMPHIS CENTER 125.85 379.25 | UNICOM 123.0 (CTAF) 0 |
|---------------------------------|---|--|

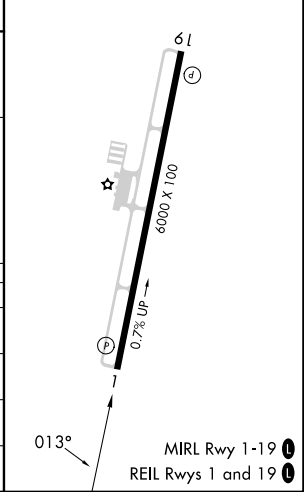


SE-1, 11 JUN 2026 to 09 JUL 2026

SE-1, 11 JUN 2026 to 09 JUL 2026



| | |
|----------|----------|
| ELEV 488 | TDZE 467 |
|----------|----------|



| CATEGORY | A | B | C | D |
|--------------|----------------------|----------------------|-------------------------------|-------------------------------|
| LPV DA | | 717-7/8 | 250 (300-7/8) | |
| LNAV/VNAV DA | | 821-1 1/4 | 354 (400-1 1/4) | |
| LNAV MDA | 880-1 | 413 (400-1) | 880-1 1/8 | 413 (400-1 1/8) |
| CIRCLING | 940-1 452 (500-1) | 980-1 492 (500-1) | 1000-1 1/2 512 (600-1 1/2) | 1200-2 1/4 712 (800-2 1/4) |