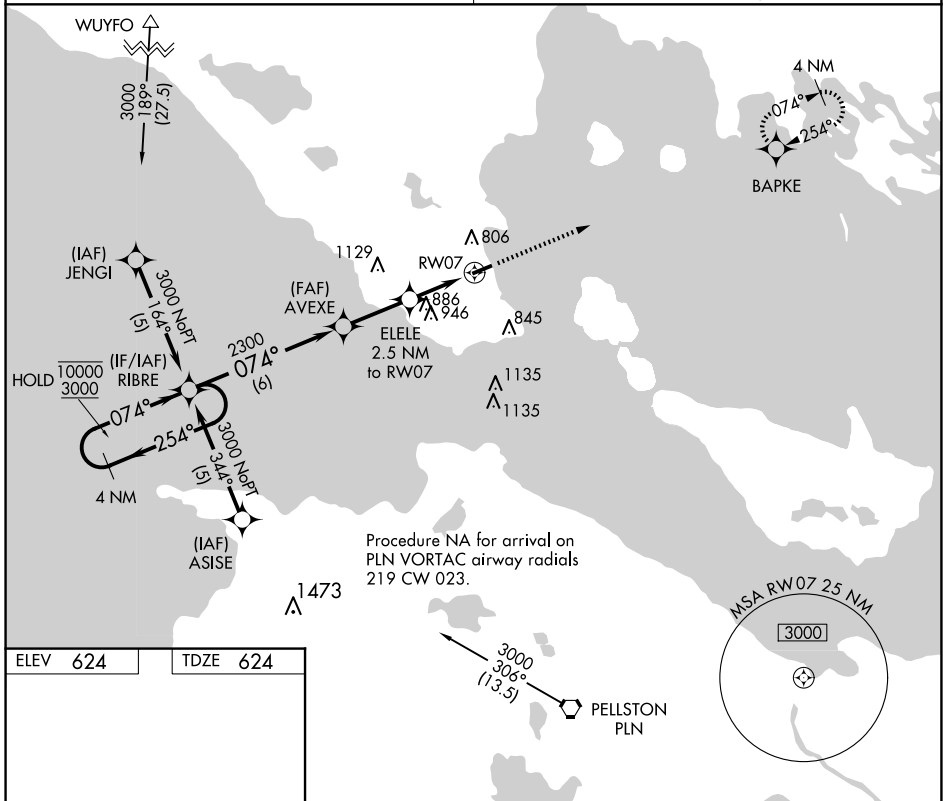


APP CRS	Rwy Idg	3800
074°	TDZE	624
	Apt Elev	624

RNAV (GPS) RWY 7

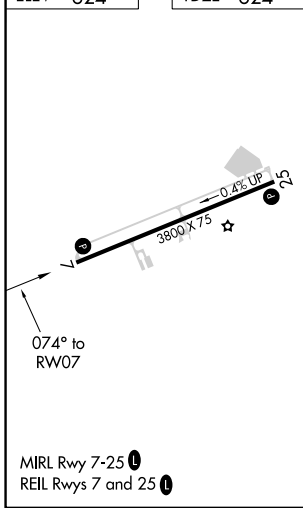
MACKINAC COUNTY (83D)

RNP APCH.	Straight-in Rwy 07 NA at night, Circling Rwy 07 NA at night. Rwy 07 helicopter visibility reduction below 1 SM NA. Circling NA at night south of Rwy 07-25.	MISSED APPROACH: Climb to 3000 direct BAPKE and hold.
MINNEAPOLIS CENTER 134.6 354.05		



Procedure NA for arrival on
 PLN VORTAC airway radials
 219 CW 023.

ELEV	624	TDZE	624
------	-----	------	-----



	4 NM Holding Pattern	RIBRE	Visual Segment - Obstacles.	3000	BAPKE
	10000	3000	254°	074°	074°
		2300	AVEXE	ELELE 2.5 NM to RW07	RW07
			6 NM	2.6 NM	2.5 NM
CATEGORY	A	B	C	D	
LNAV MDA	1200-1	576 (600-1)	1200-1 5/8 576 (600-1 5/8)	NA	
CIRCLING	1260-1	636 (700-1)	1300-2 676 (700-2)	NA	

EC-1, 11 JUN 2026 to 09 JUL 2026

EC-1, 11 JUN 2026 to 09 JUL 2026