

APP CRS 323°	Rwy Ldg 3818
	TDZE 667
	Apt Elev 674

RNAV (GPS) Z RWY 32

BETHEL RGNL (ØB1)

RNP APCH - GPS.

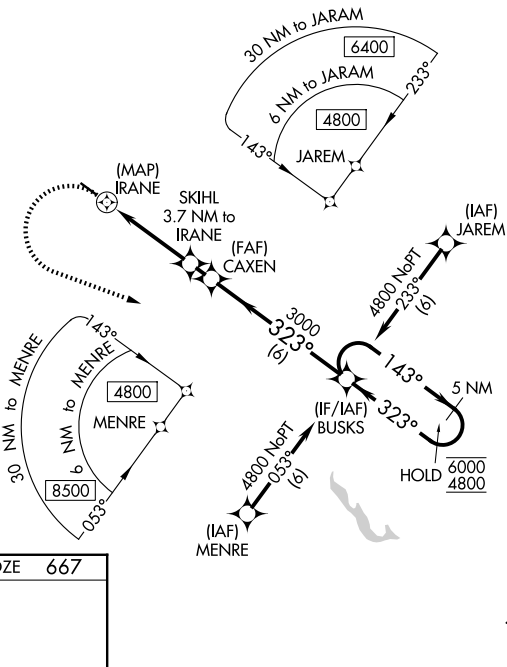
⚠ Rwy 32 helicopter visibility reduction below ¾ SM NA. Circling Rwy 14 NA at night. VDP NA when using AUG altimeter setting. When local altimeter setting not received, use AUG altimeter setting and increase all MDAs 160 feet. Caution any go-around after passing IRANE, may not provide standard obstacle clearance.

⚠ NA

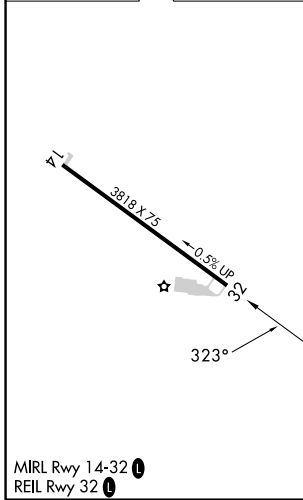
❄ -22°C

MISSED APPROACH: Climbing left turn to 4800 direct BUSKS and hold, continue climb-in-hold to 4800.

AWOS-AV 119.075	PORTLAND APP CON * 125.5 269.35	CTAF 122.9 0
---------------------------	---	------------------------



ELEV 674	TDZE 667
----------	----------



4800	BUSKS	5 NM Holding Pattern		
IRANE	1.8 NM to IRANE	SKIHL 3.7 NM to IRANE	CAXEN	BUSKS
2580	3000	323°	143°	6000
0.5	1.8 NM	1.9 NM	0.9 NM	6 NM
CATEGORY	A	B	C	D
LNAV MDA	1740-1½	1073 (1100-1½)	NA	
CIRCLING	1740-1½	2340-1½	NA	
	1066 (1100-1½)	1666 (1700-1½)		

NE-1, 11 JUN 2026 to 09 JUL 2026

NE-1, 11 JUN 2026 to 09 JUL 2026