

APP CRS	Rwy Ldg 2298
067°	TDZE 41
	Apt Elev 41

RNAV (GPS) RWY 7

FALMOUTH AIRPARK (5B6)

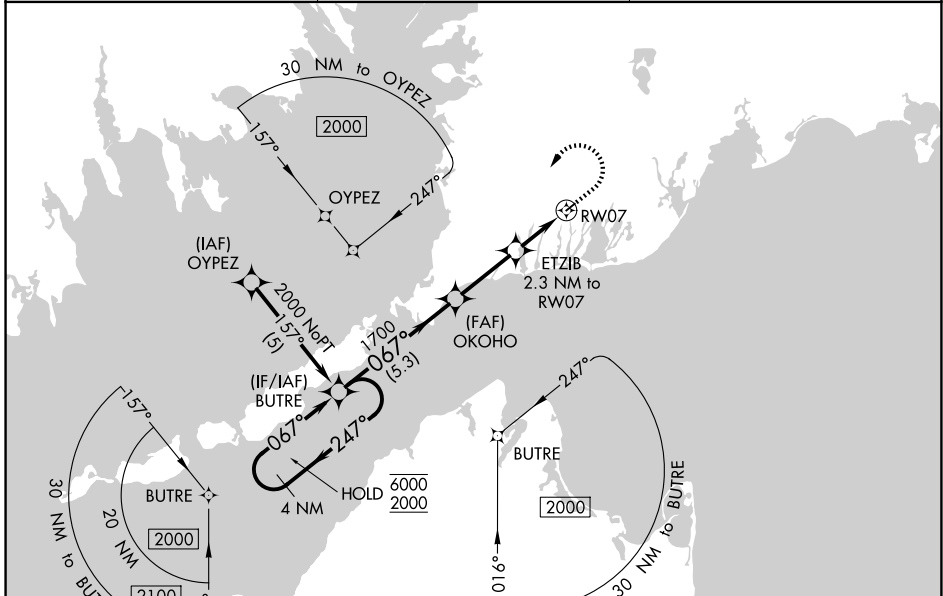
RNP APCH - GPS.

▼ Rwy 7 helicopter visibility reduction below 1 SM NA. Use Cape Cod Coast Guard Air Station altimeter setting. When not received, procedure NA. Procedure NA at night.

▲ NA

MISSED APPROACH: Climb to 800 then climbing left turn to 2000 direct BUTRE and hold.

BOSTON APP CON 118.2	UNICOM 123.075 (CTAF)	122.7 0
--------------------------------	---------------------------------	-----------------------



NE-1, 11 JUN 2026 to 09 JUL 2026

NE-1, 11 JUN 2026 to 09 JUL 2026

ELEV 41	TDZE 41
----------------	----------------

