

APP CRS	Rwy Ldg	5500
003°	TDZE	696
	Apt Elev	718

RNAV (GPS) RWY 2

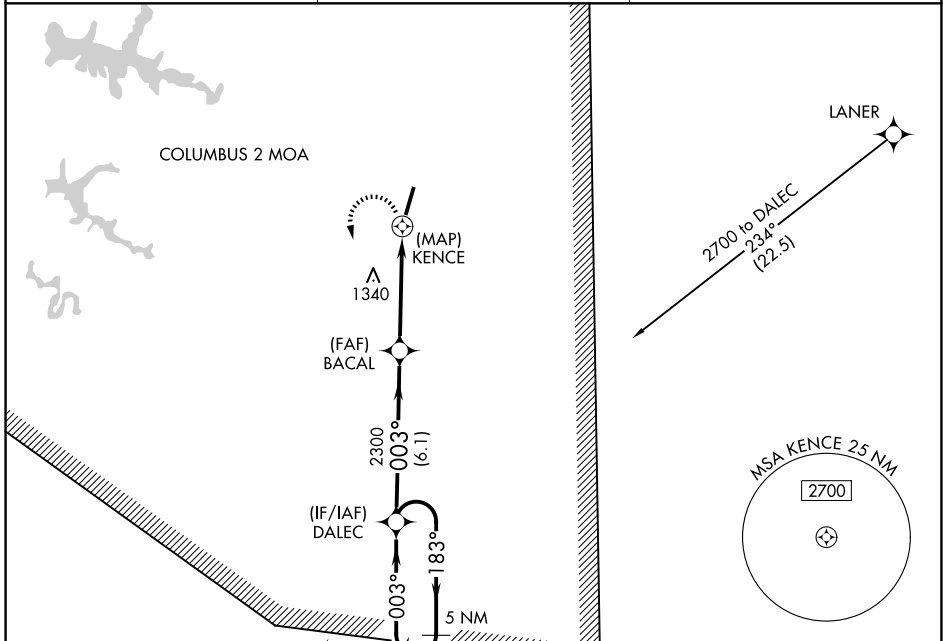
BILL PUGH FLD (M22)

RNP APCH-GPS.

▼ Procedure NA at night. Rwy 2 helicopter visibility reduction below 1 SM NA. Use Muscle Shoals altimeter setting; when not received, use Decatur altimeter setting and increase all MDA 60 feet.
▲ NA

MISSED APPROACH: Climbing left turn to 2700 direct DALEC and hold.

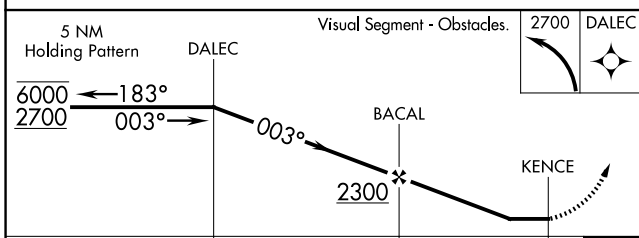
MSL ASOS 119.425	MEMPHIS CENTER 120.8 307.0	UNICOM 122.8 (CTAF) 0
----------------------------	--------------------------------------	---------------------------------



SE-4, 11 JUN 2026 to 09 JUL 2026

SE-4, 11 JUN 2026 to 09 JUL 2026

ELEV 718	D TDZE 696
----------	-------------------



CATEGORY	A	B	C	D
LNVA MDA	1660-1¼ 964 (1000-1¼)	1660-1½ 964 (1000-1½)	1660-3	964 (1000-3)
CIRCLING	1660-1¼ 942 (1000-1¼)	1660-1½ 942 (1000-1½)	1720-3	1002 (1100-3)

