

APP CRS	Rwy Ldg TDZE	N/A
166°	Apt Elev	723

# RNAV (GPS)-A

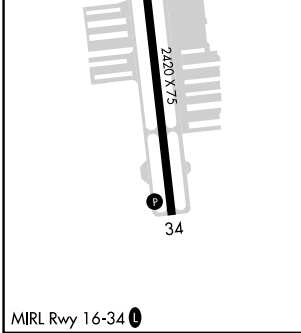
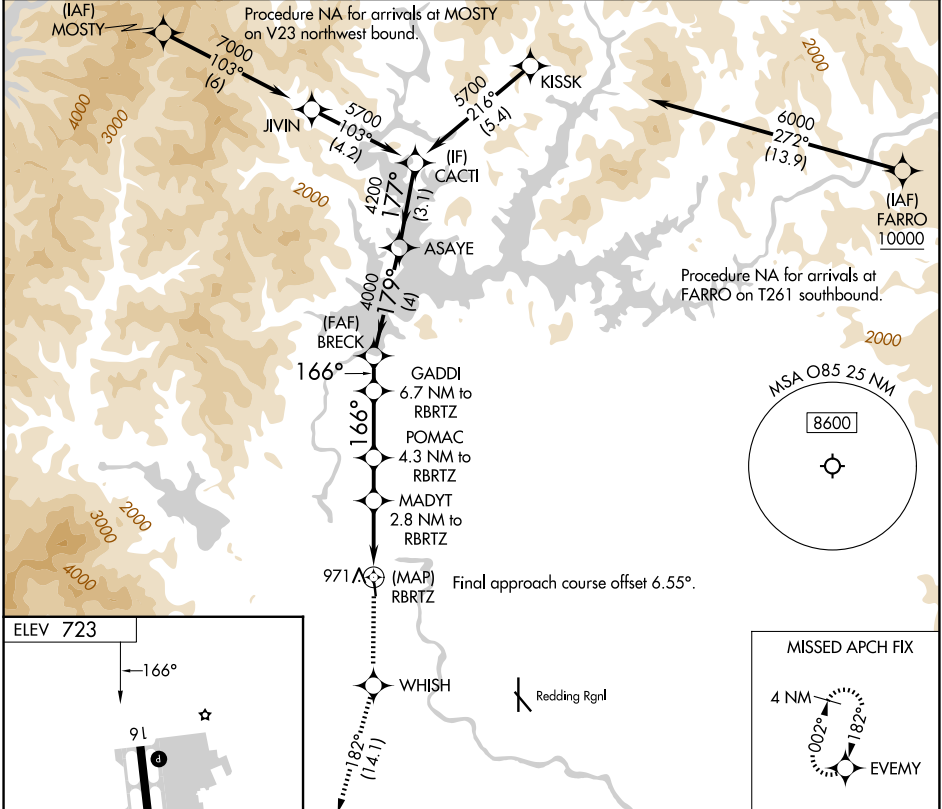
BENTON FLD (O85)

RNP APCH - GPS.

Procedure NA at night. Rwy 16, 34 helicopter visibility reduction below 1 SM NA. When local altimeter setting not received, use Redding Rgnl altimeter setting and increase all MDAs 60 feet.

MISSED APPROACH: Climb to 4000 direct WHISH and on track 182° to EVMY and hold.

AWOS-2 <b>118.675</b>	OAKLAND CENTER <b>132.2 350.3</b>	UNICOM <b>122.8 (CTAF) 0</b>
--------------------------	--------------------------------------	---------------------------------



4000	WHISH	EVMY	VGSI and descent angles not coincident (VGSI Angle 3.50/TCH 24).		CACTI		
↑	182°	tr	GADDI 6.7 NM to RBRTZ	BRECK	ASAYE		
			POMAC 4.3 NM to RBRTZ	4200	5700		
			MADYT 2.8 NM to RBRTZ	3.70°	179°		
			RBRTZ	TCH 60	177°		
			1960	3500	4000		
			2560	166°	179°		
			2.8 NM	1.5 NM	2.4 NM	4 NM	3.1 NM
CATEGORY	A	B	C	D			
CIRCLING	1340-1 617 (700-1)	1600-1¼ 877 (900-1¼)		NA			

SW-2, 11 JUN 2026 to 09 JUL 2026

SW-2, 11 JUN 2026 to 09 JUL 2026