

WAAS CH 68560 W34B	APP CRS 340°	Rwy Idg TDZE 4529 Apt Elev 4534	5020 4529 4534
--	------------------------	---	---

RNAV (GPS) RWY 34

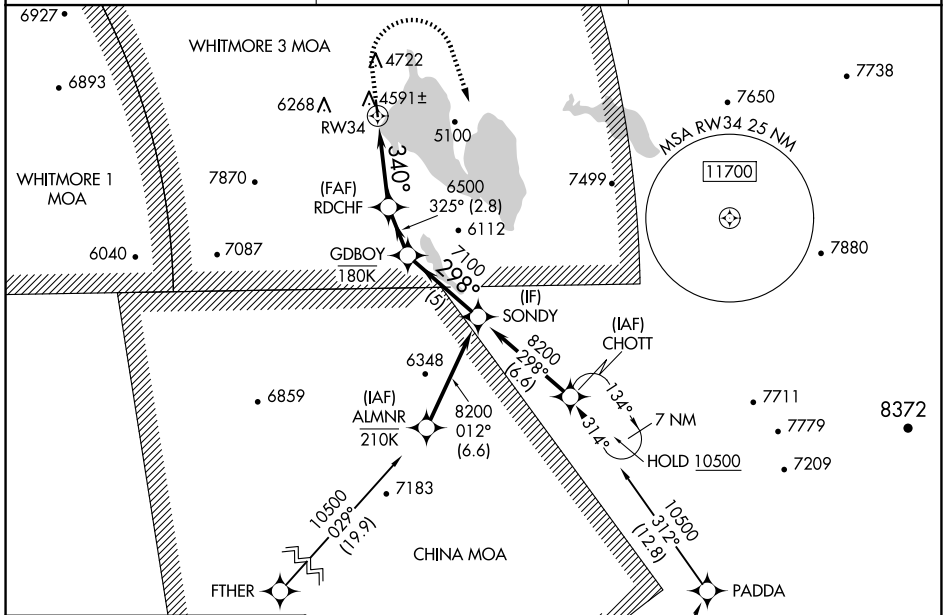
ROGERS FLD (005)

RNP APCH - GPS.

▼ When local altimeter setting not received, procedure NA.
▲ Rwy 34 helicopter visibility reduction below 3/4 SM NA.
 Circling NA for Cat C west of Rwy 16-34. Circling NA at night.

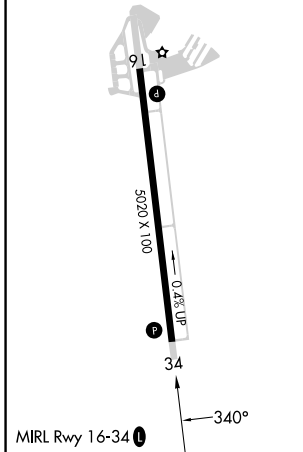
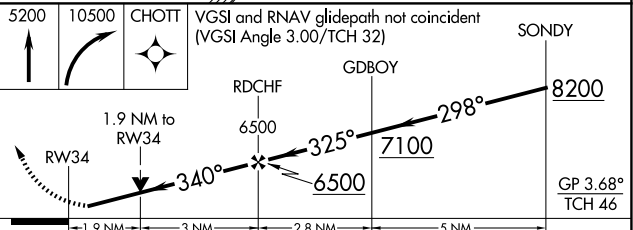
MISSED APPROACH: (Do not exceed 165K until initial turn completion) Climb to 5200 then climbing right turn to 10500 direct CHOTT and hold, continue climb-in-hold to 10500.
 *Missed approach requires a minimum climb of 377 feet per NM to 7680 feet.

AWOS-3 118.275	OAKLAND CENTER 132.2 350.3	UNICOM 122.8(CTAF)
--------------------------	--------------------------------------	------------------------------



ELEV 4534	TDZE 4529
-----------	-----------

Procedure NA for arrivals at MRGGO on V200 westbound.



CATEGORY	A	B	C	D
LPV DA*	4779-3/4	250 (300-3/4)	4829-7/8 300 (300-7/8)	NA
LNAV MDA*	5160-1	631 (700-1)	5160-1 3/4 631 (700-1 3/4)	NA
LNAV MDA	5360-1 831 (900-1)	5360-1 1/4 831 (900-1 1/4)	5360-2 1/2 831 (900-2 1/2)	NA
CIRCLING	5440-1 1/4 906 (1000-1 1/4)	5660-1 1/2 1126 (1200-1 1/2)	5660-3 1126 (1300-3)	NA

SW-2, 11 JUN 2026 to 09 JUL 2026

SW-2, 11 JUN 2026 to 09 JUL 2026