

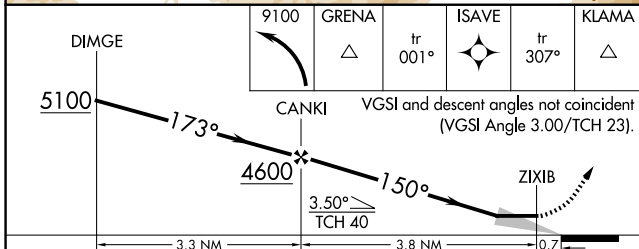
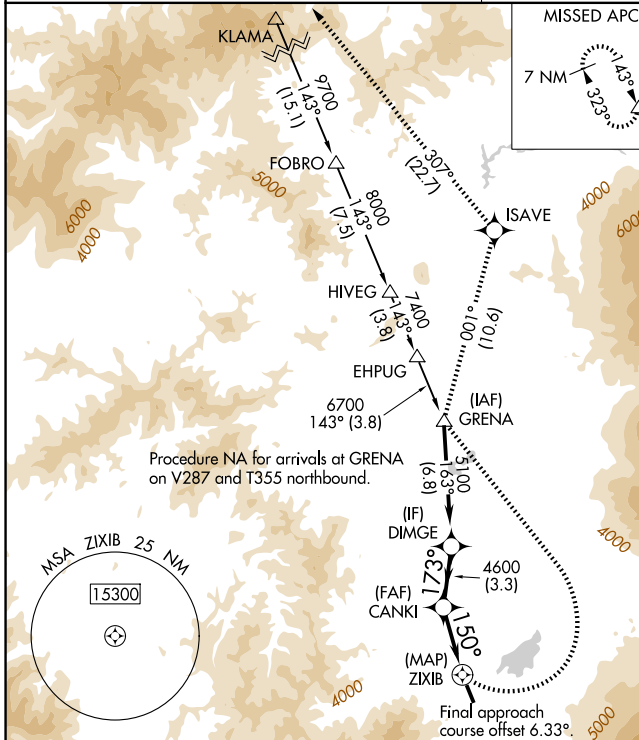
| | | |
|-------------|----------|-------------|
| APP CRS | Rwy Ldg | 5000 |
| 150° | TDZE | 2934 |
| | Apt Elev | 2943 |

RNAV (GPS) RWY 14

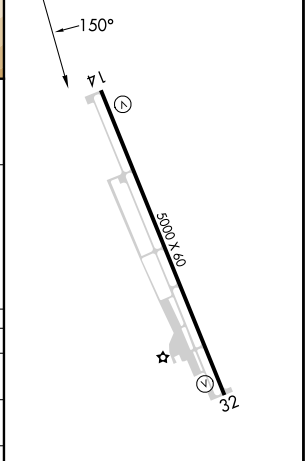
WEED (O46)

| | |
|--|---|
| RNP APCH - GPS. | MISSED APPROACH: (Do not exceed 185K until GRENA) Climbing left turn to 9100 direct GRENA then on track 001° to ISAVE then on track 307° to KLAMA and hold. |
| <p>⚠ Circling NA southwest of Rwy 14-32.</p> <p>⚠ NA Use Montague altimeter setting.</p> | *Misted approach requires minimum climb of 325 feet per NM to 4000. |

| | |
|---------------------------------------|---------------------------------|
| SEATTLE CENTER 124.85 306.3 | UNICOM 122.7 (CTAF) 0 |
|---------------------------------------|---------------------------------|



| | |
|-----------|-----------|
| ELEV 2943 | TDZE 2934 |
|-----------|-----------|



| CATEGORY | A | B | C | D |
|-----------|-----------------------|--|--|--|
| RNAV MDA* | 3440-1 | 506 (500-1) | 3580-1 $\frac{7}{8}$ 646 (700-1 $\frac{7}{8}$) | 3700-2 $\frac{1}{2}$ 766 (800-2 $\frac{1}{2}$) |
| RNAV MDA | 3440-1 506 (500-1) | 3480-1 546 (600-1) | 3780-2 $\frac{1}{2}$ 846 (900-2 $\frac{1}{2}$) | 3820-2 $\frac{1}{2}$ 886 (900-2 $\frac{1}{2}$) |
| CIRCLING | 3680-1 737 (800-1) | 3840-1 $\frac{1}{4}$ 897 (900-1 $\frac{1}{4}$) | 4220-3 1277 (1300-3) | 4440-3 1497 (1500-3) |

MIRL Rwy 14-32

SW-2, 11 JUN 2026 to 09 JUL 2026

SW-2, 11 JUN 2026 to 09 JUL 2026