

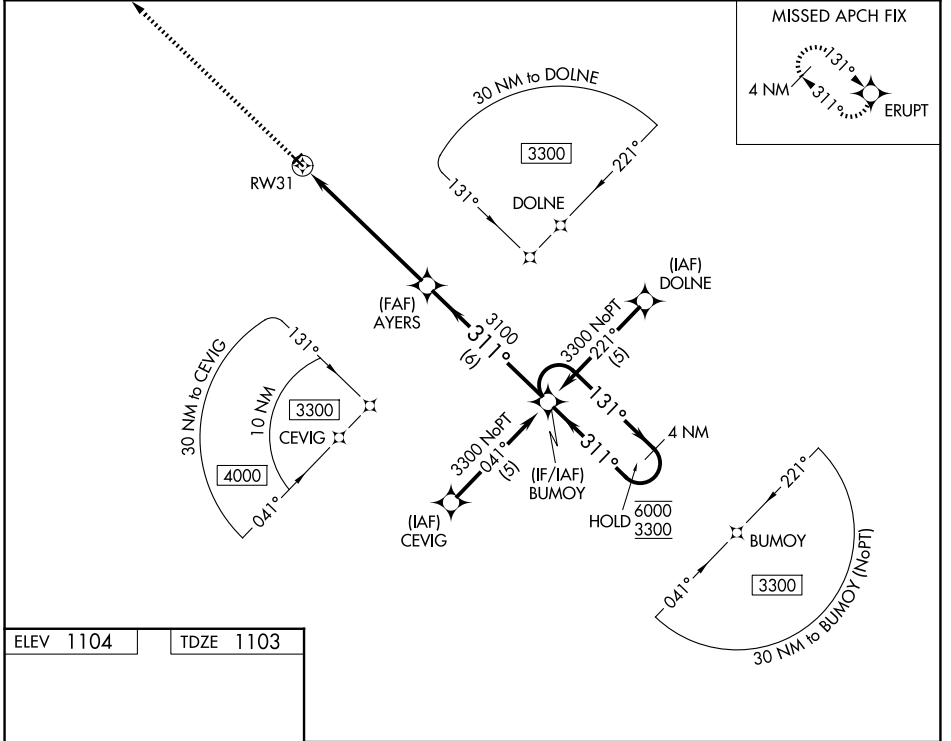
WAAS CH <b>45947</b> <b>W31A</b>	APP CRS <b>311°</b>	Rwy Ldg TDZE Apt Elev	<b>3100</b> <b>1103</b> <b>1104</b>
--	------------------------	-----------------------------	---

# RNAV (GPS) RWY 31

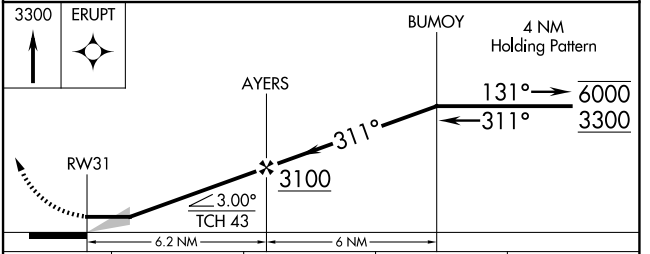
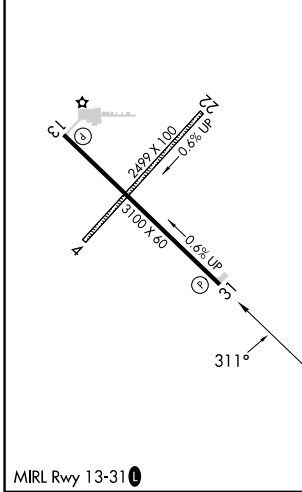
PARK RIVER - W C SKJERVEN FLD (Y37)

RNP APCH - GPS.	MISSED APPROACH: Climb to 3300 direct ERUPT and hold.
Circling Rwy 13 NA at night. Circling NA to Rwys 4 and 22. Use GAF altimeter setting.	

GAF AWOS-3 <b>118.625</b>	GRAND FORKS APP CON★ <b>118.1 318.1</b>	UNICOM <b>122.8 (CTAF) 0</b>
------------------------------	--	---------------------------------



ELEV 1104	TDZE 1103
-----------	-----------



CATEGORY	A	B	C	D
LP MDA	1580-1	477 (500-1)		NA
LNAV MDA	1600-1	497 (500-1)		NA
CIRCLING	1680-1 576 (600-1)	1860-1 756 (800-1)		NA

NC-1, 11 JUN 2026 to 09 JUL 2026

NC-1, 11 JUN 2026 to 09 JUL 2026