

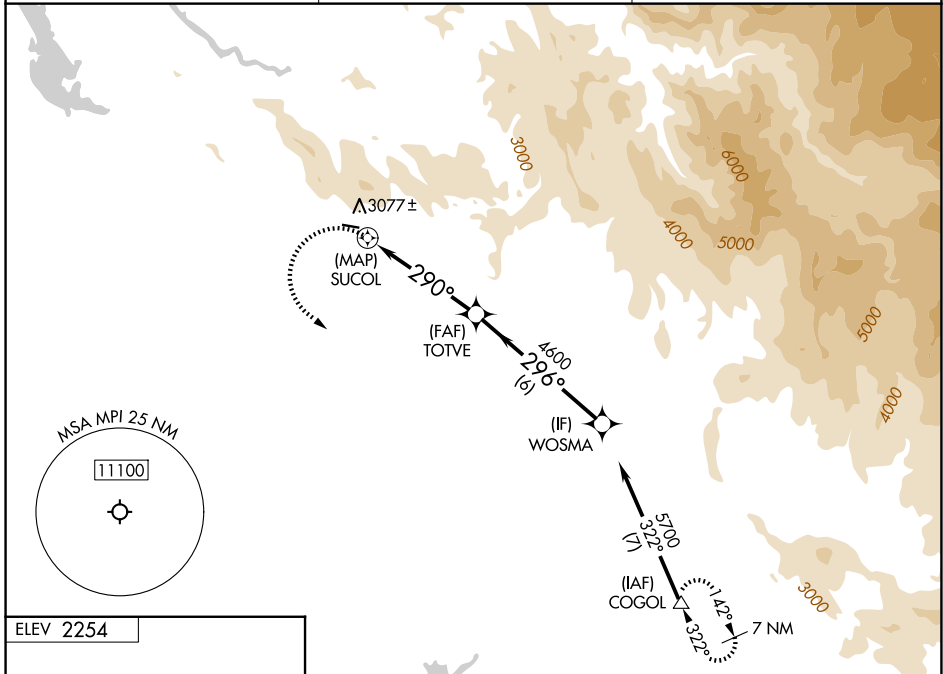
APP CRS	Rwy Ldg	N/A
<b>290°</b>	TDZE	N/A
	Apt Elev	<b>2254</b>

# RNAV (GPS)-A

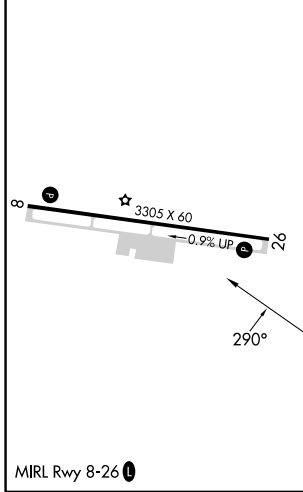
MARIPOSA-YOSEMITE (MPI)

RNP APCH - GPS.		MISSED APPROACH: Climbing left turn to 7000 direct COGOL and hold.
	Circling NA north of Rwy 8-26. When local altimeter setting not received, use MER altimeter setting and increase all MDAs 360 feet. Procedure NA at night.	

AWOS-3 <b>135.6</b>	OAKLAND CENTER <b>121.25 327.0</b>	UNICOM <b>122.7 (CTAF) ①</b>
------------------------	---------------------------------------	---------------------------------



ELEV 2254



MIRL Rwy 8-26 ①

Procedure NA for arrivals at COGOL on V459 southeast bound.

7000	COGOL		
	△		
		TOTVE	WOSMA
		4600	5700
		296°	
		290°	
		4.8 NM	6 NM
CATEGORY	A	B	C D
CIRCLING	4100-1¼ 1846 (1900-1¼)	4180-1½ 1926 (2000-1½)	NA

SW-2, 11 JUN 2026 to 09 JUL 2026

SW-2, 11 JUN 2026 to 09 JUL 2026