

WAAS CH 56540 W28A	APP CRS 283°	Rwy Ldg TDZE 4230 Apt Elev 4230
--	------------------------	---

RNAV (GPS) RWY 28

HAWTHORNE INDUSTRIAL (HTH)

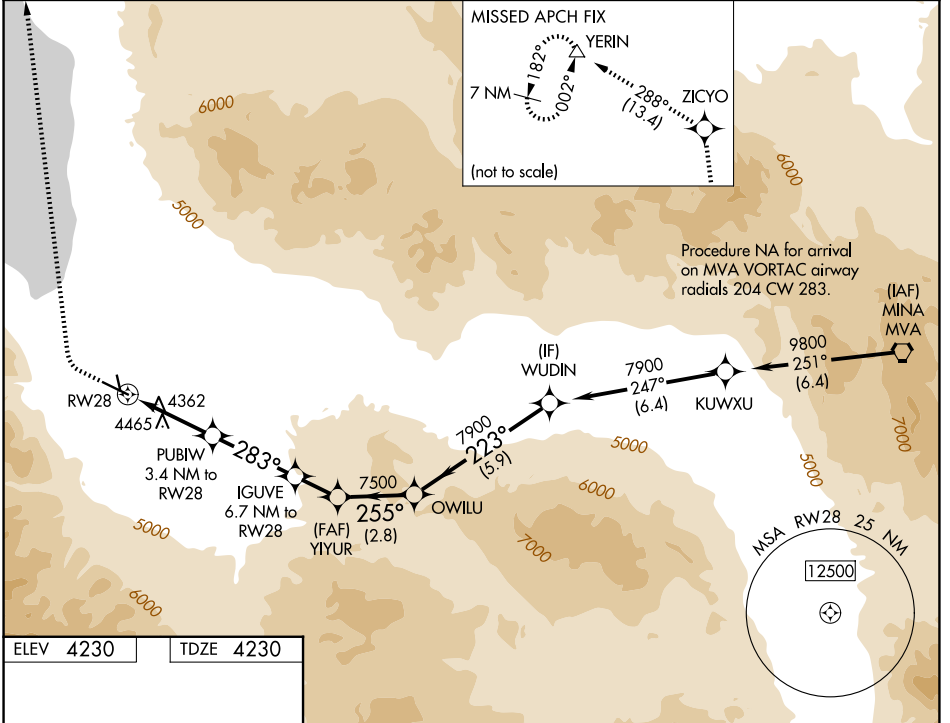
⚠ Circling NA to Rwy's 15 and 33. When local altimeter setting not received, procedure NA. Circling NA south of Rwy 10-28. DME/DME RNP-0.3 NA. Rwy 28 helicopter visibility reduction below ¼ SM NA.

⚠ MISSED APPROACH: Climb to 4750 then climbing right turn to 10000 direct ZICYO and on track 288° to YERIN and hold.

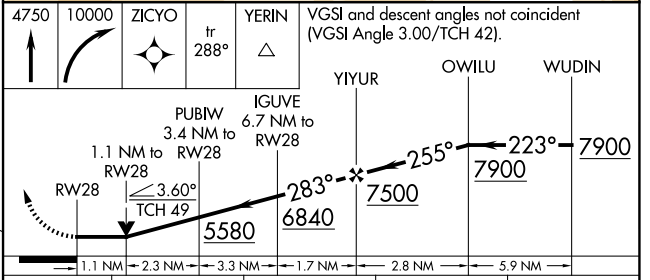
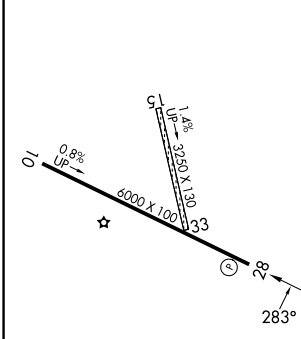
AWOS-3
120.225

OAKLAND CENTER
125.75 284.65

UNICOM
122.8 (CTAF) ①



ELEV 4230 TDZE 4230



CATEGORY	A	B	C	D
LP MDA	4620-1	390 (400-1)	4620-1½ 390 (400-1½)	NA
LNAV MDA	4720-1	490 (500-1)	4720-1¾ 490 (500-1¾)	NA
CIRCLING	4720-1	490 (500-1)	5680-3 1450 (1500-3)	NA

REIL Rwy's 10 and 28 ①
MIRL Rwy 10-28 ①

SW-4, 11 JUN 2026 to 09 JUL 2026

SW-4, 11 JUN 2026 to 09 JUL 2026