

APP CRS	Rwy Ldg	<b>4017</b>
<b>076°</b>	TDZE	<b>1901</b>
	Apt Elev	<b>1907</b>

# RNAV (GPS) RWY 8

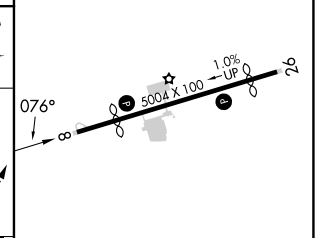
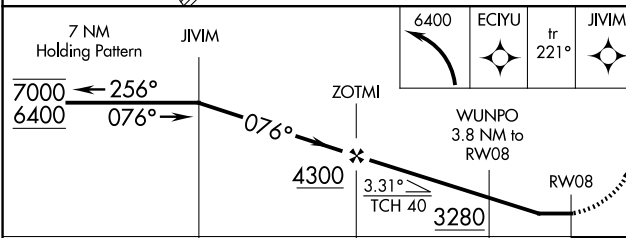
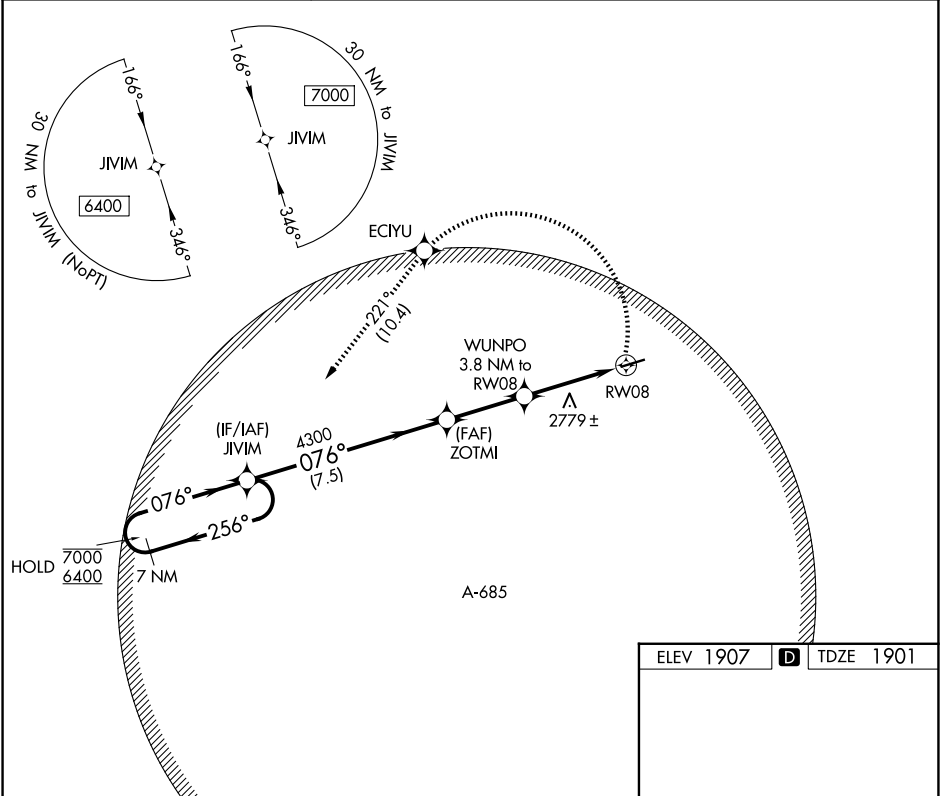
BLAIRSVILLE (DZJ)

RNP APCH - GPS.

**Procedure NA at night. Rwy 8 helicopter visibility reduction below 1 SM NA. When local altimeter setting not received, procedure NA. Circling NA for Cat D.**

**MISSED APPROACH:** (Do not exceed 210K until JIVIM) Climbing left turn to 6400 direct ECIYU and on track 221° to JIVIM and hold, continue climb-in-hold to 6400.

AWOS-3PT <b>119.325</b>	ATLANTA CENTER <b>134.8 379.95</b>	UNICOM <b>122.8 (CTAF)</b>
----------------------------	---------------------------------------	-------------------------------



ELEV 1907	<b>D</b>	TDZE 1901
-----------	----------	-----------

CATEGORY	A	B	C	D
LNVA MDA	2860-1¼ 959 (1000-1¼)	2860-1½ 959 (1000-1½)	2860-3	959 (1000-3)
CIRCLING	2860-1¼ 953 (1000-1¼)	2940-1½ 1033 (1100-1½)	3180-3 1273 (1300-3)	NA

MIRL Rwy 8-26 **D**

SE-4, 11 JUN 2026 to 09 JUL 2026

SE-4, 11 JUN 2026 to 09 JUL 2026