

WAAS CH 45941 W03A	APP CRS 033°	Rwy Ldg TDZE 3507 1481	Apt Elev 1486
--	------------------------	--	-------------------------

RNAV (GPS) RWY 3

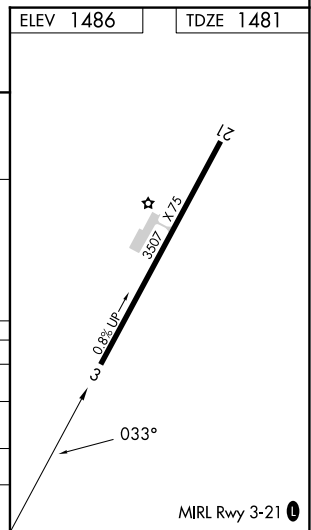
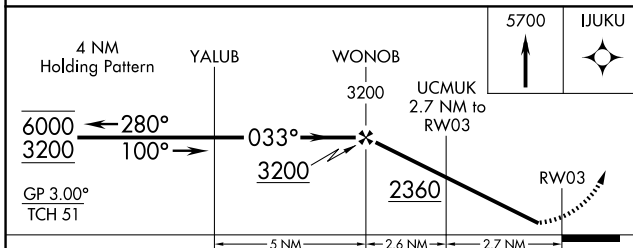
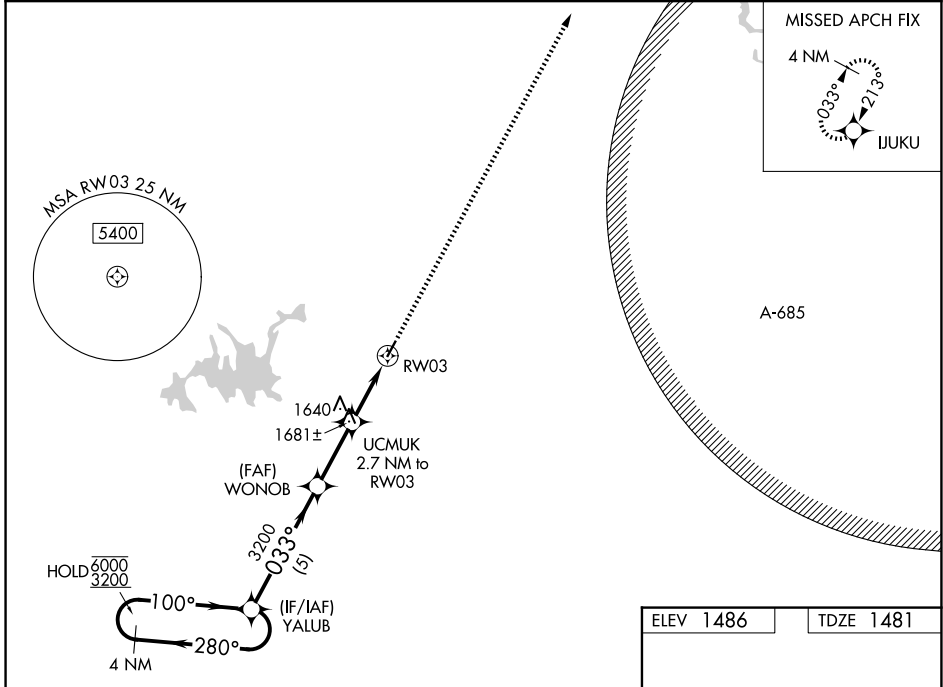
GILMER COUNTY (49A)

RNP APCH - GPS.

Procedure NA at night. Rwy 3 helicopter visibility reduction below 1 SM NA.
For uncompensated Baro-VNAV systems, LNAV/VNAV NA below -17°C or above 54°C.

MISSED APPROACH:
Climb to 5700 direct IJUKU and hold, continue climb-in-hold to 5700.

AWOS-3 118.075	ATLANTA CENTER 133.1 342.425	UNICOM 123.0 (CTAF)
--------------------------	--	-------------------------------



CATEGORY	A	B	C	D
LPV DA	1731-1		250 (300-1)	
LNAV/VNAV DA	1922-1 $\frac{3}{8}$		441 (500-1 $\frac{3}{8}$)	
LNAV MDA	1900-1	419 (500-1)	1900-1 $\frac{1}{8}$	419 (500-1 $\frac{1}{8}$)
CIRCLING	1980-1 494 (500-1)	2560-1 $\frac{1}{2}$ 1074 (1100-1 $\frac{1}{2}$)	2560-3	1074 (1100-3)

SE-4, 11 JUN 2026 to 09 JUL 2026

SE-4, 11 JUN 2026 to 09 JUL 2026