

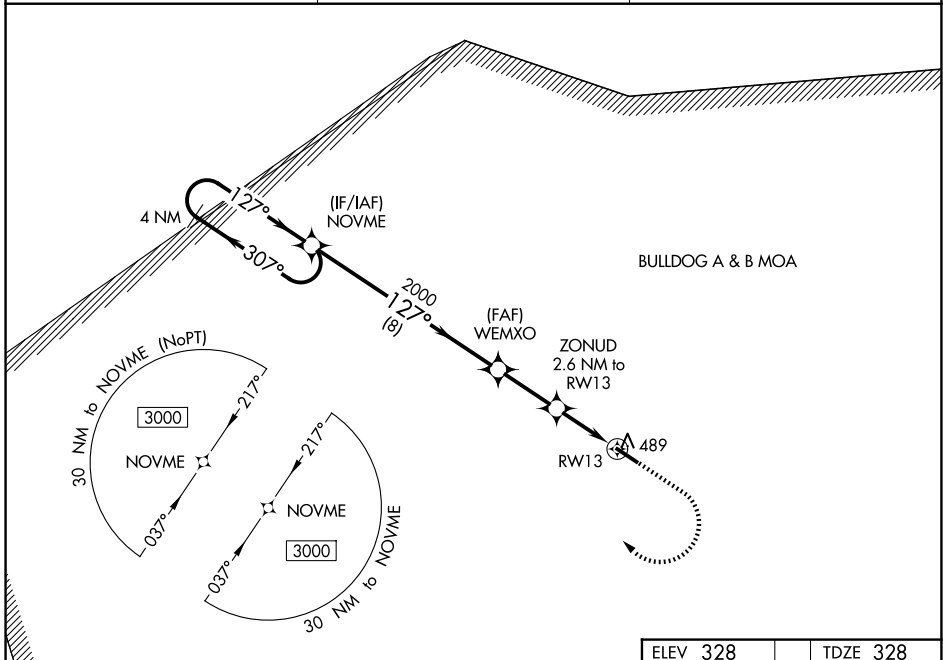
WAAS CH <b>56539</b> <b>W13A</b>	APP CRS <b>127°</b>	Rwy Ldg TDZE Apt Elev	<b>5002</b> <b>328</b> <b>328</b>
--	------------------------	-----------------------------	---

# RNAV (GPS) RWY 13

LOUISVILLE MUNI (2J3)

RNP APCH GPS.	MISSED APPROACH: Climb to 1000 then climbing right turn to 3000 direct NOVME and hold.
For uncompensated Baro-VNAV systems, LNAV/VNAV NA below -15°C or above 54°C. Rwy 13 helicopter visibility reduction below 3/4 SM NA.	

AWOS-3PT <b>119.35</b>	AUGUSTA APP CON <b>126.8 270.3</b>	CTAF <b>122.9</b>
---------------------------	---------------------------------------	----------------------



SE-4, 11 JUN 2026 to 09 JUL 2026

SE-4, 11 JUN 2026 to 09 JUL 2026

VGSi and RNAV glidepath not coincident (VGSi Angle 3.83/TCH 23).		1000	3000	NOVME
4 NM Holding Pattern				
3000	← 307°	127° →	2000	1200
GP 3.00°				
TCH 45				
	8 NM	2.5 NM	1.5 NM	1.1 NM
WEMXO	ZONUD			
2000	2.6 NM to RW13			
		1.1 NM to RW13		
			RW13	
				5000' x 100'
				127°
				31
CATEGORY	A	B	C	D
LPV DA	578-1		250 (300-1)	
LNAV/VNAV DA	768-1½		440 (500-1½)	
LNAV MDA	800-1	472 (500-1)	800-1¾	472 (500-1¾)
CIRCLING	840-1	980-1	980-1¾	980-2
	512 (600-1)	652 (700-1)	652 (700-1¾)	652 (700-2)
				MIRL Rwy 13-31