

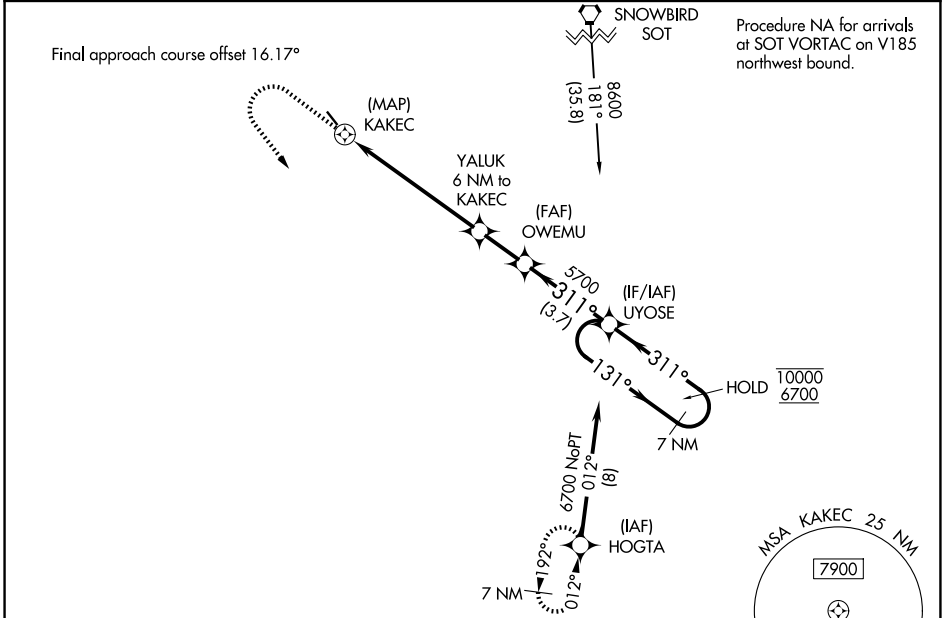
APP CRS	Rwy Ldg	3060
311°	TDZE	2807
	Apt Elev	2857

RNAV (GPS) RWY 33

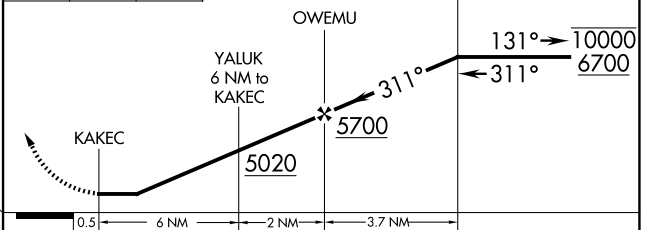
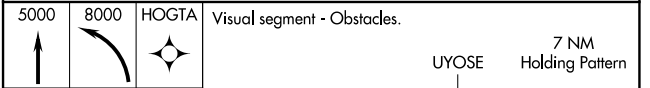
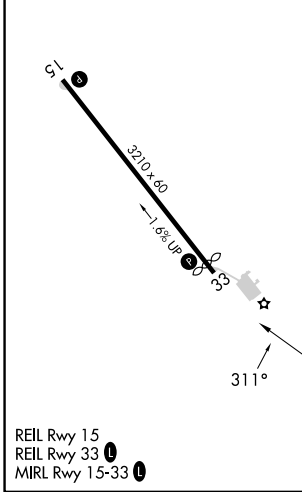
JACKSON COUNTY (24A)

RNP APCH.	MISSED APPROACH: Climb to 5000 then climbing left turn to 8000 direct HOGTA and hold.
<p>Procedure NA at night.</p> <p>Rwy 33 helicopter visibility reduction below 1 SM NA.</p> <p>-13°C</p>	

AWOS-3PT 118.9	ATLANTA CENTER 134.8 379.95	UNICOM 123.0 (CTAF) 0
--------------------------	---------------------------------------	---------------------------------



ELEV 2857	TDZE 2807
-----------	-----------



CATEGORY	A	B	C	D
LNAV MDA	4360-1¼ 1553 (1600-1¼)	4360-1½ 1553 (1600-1½)		NA
CIRCLING	4360-1¼ 1503 (1600-1¼)	4520-1½ 1663 (1700-1½)		NA

SE-2, 11 JUN 2026 to 09 JUL 2026

SE-2, 11 JUN 2026 to 09 JUL 2026