

WAAS CH 61235 W03A	APP CRS 027°	Rwy Ldg 4002 TDZE 617 Apt Elev 633
--	------------------------	---

RNAV (GPS) RWY 3

MONTGOMERY COUNTY (43A)

RNP APCH-GPS.

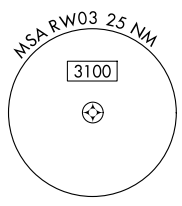
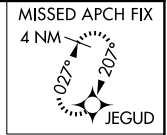
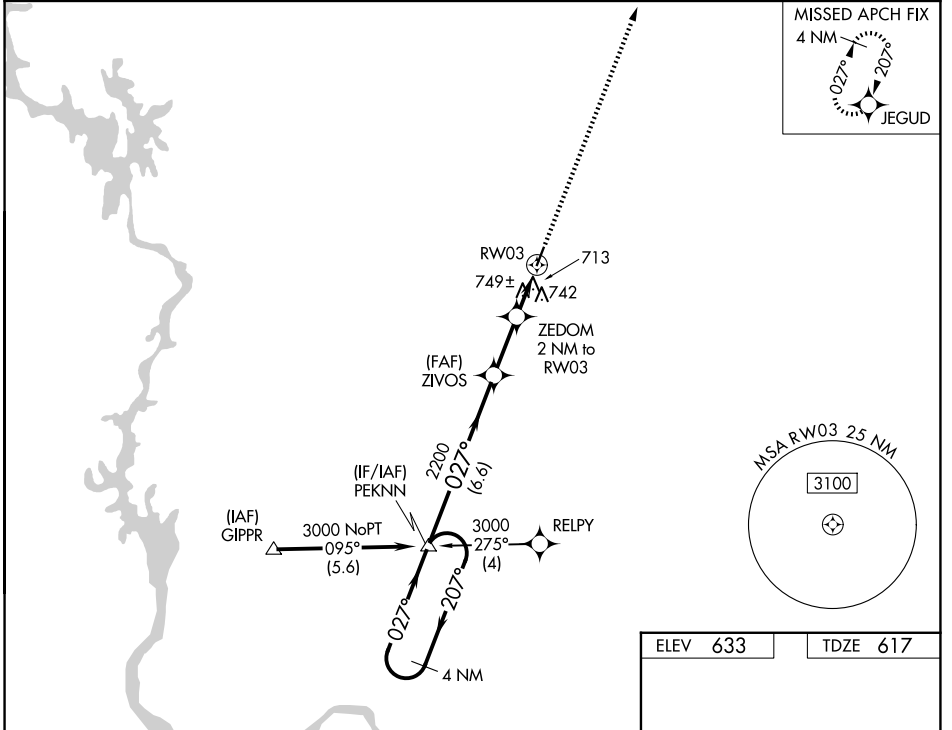
▼ Use Asheville altimeter setting; when not received, use Albemarle altimeter setting.
▲ NA Circling Rwy 21 NA at night. Rwy 3 helicopter visibility reduction below ¼ SM NA.

MISSED APPROACH: Climb to 3000 direct JEGUD and hold.

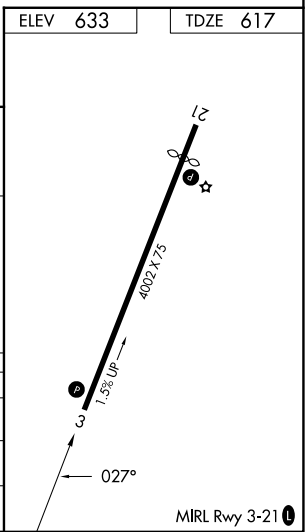
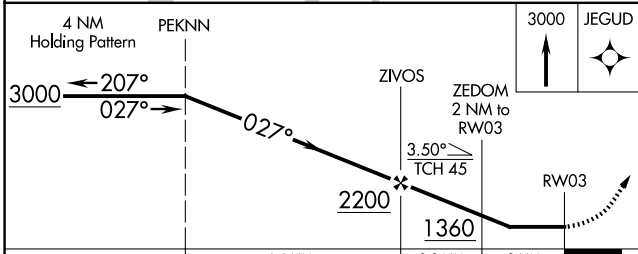
HBI AWOS-3
119.275

FAYETTEVILLE APP CON
127.8 343.725

UNICOM
122.8 (CTAF) 0



ELEV 633	TDZE 617
----------	----------



CATEGORY	A	B	C	D
LP MDA	1060-1	443 (500-1)		NA
LNAV MDA	1080-1	463 (500-1)		NA
CIRCLING	1240-1 607 (700-1)	1340-1 707 (800-1)		NA

SE-2, 11 JUN 2026 to 09 JUL 2026

SE-2, 11 JUN 2026 to 09 JUL 2026