

APP CRS	Rwy Ldg	3603
051°	TDZE	226
	Apt Elev	231

RNAV (GPS) RWY 5

BAMBERG COUNTY (99N)

RNP APCH - GPS.

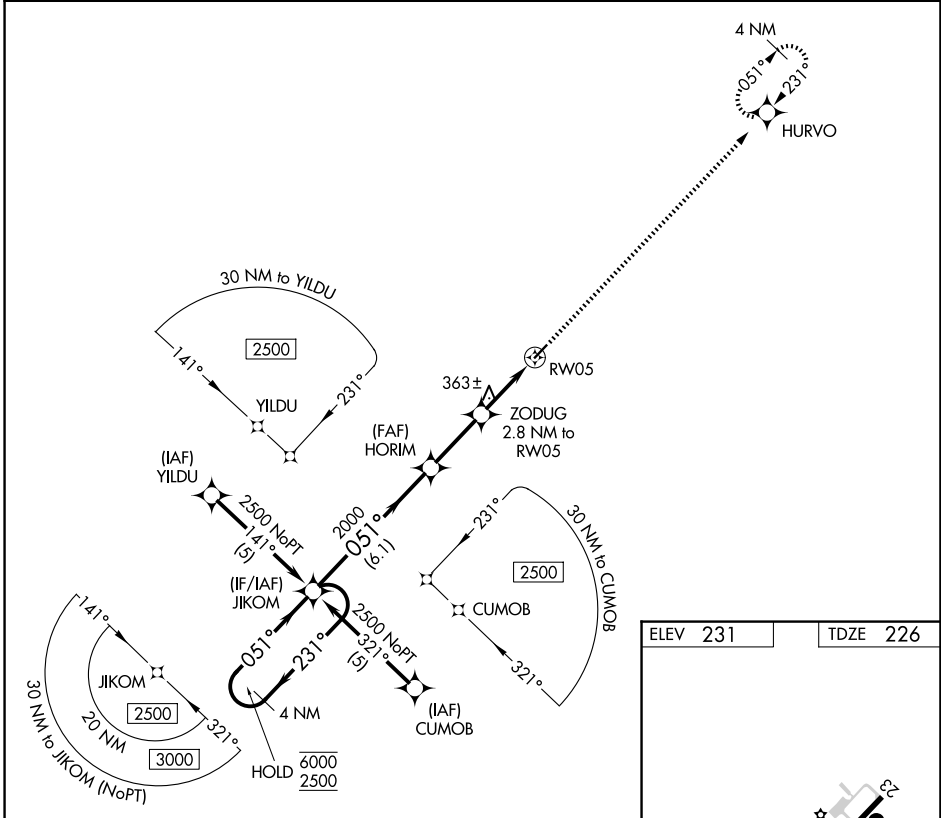
▼ Rwy 5 helicopter visibility reduction below 1 SM NA. Procedure NA at night. Use OGB altimeter setting; when not received, procedure NA.

MISSED APPROACH: Climb to 2500 direct HURVO and hold.

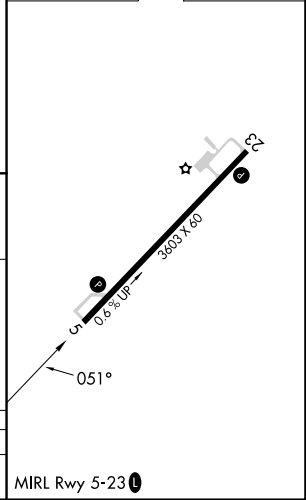
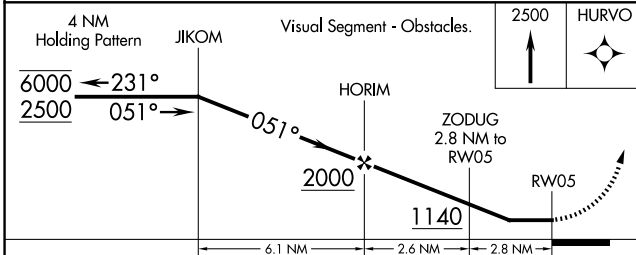
UNICOM **122.8 (CTAF) 0**

OGB ASOS **118.525**

COLUMBIA APP CON **124.15 338.2**



ELEV 231	TDZE 226
----------	----------



CATEGORY	A	B	C	D
LNAV MDA	740-1	514 (600-1)	NA	NA

SE-2, 11 JUN 2026 to 09 JUL 2026

SE-2, 11 JUN 2026 to 09 JUL 2026