

APP CRS 065°	Rwy Ldg 4498
	TDZE 2240
	Apt Elev 2241

RNAV (GPS) RWY 7

JOHNSON COUNTY (6A.4)

RNP APCH - GPS

NA
-9°C

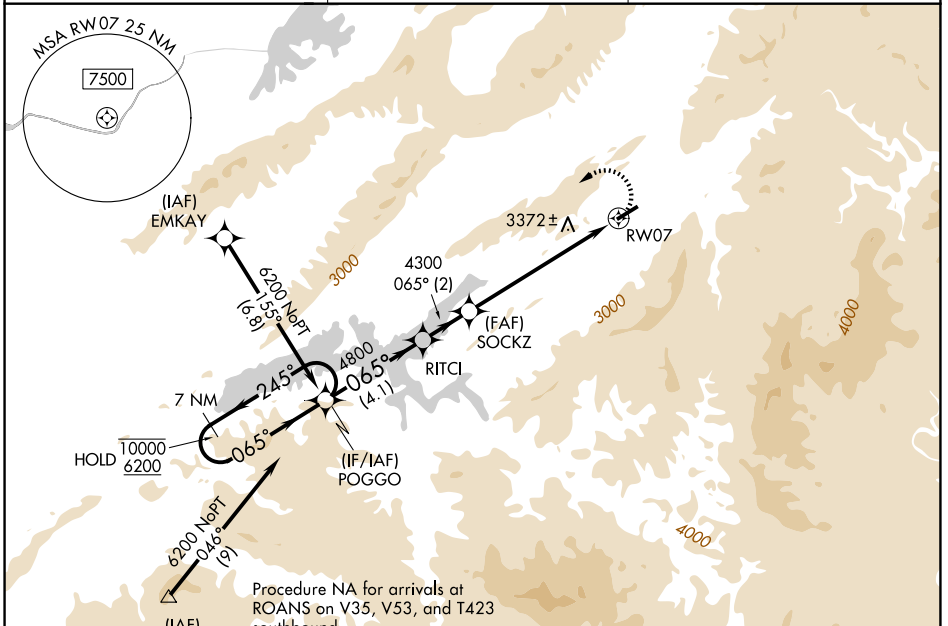
Rwy 7 helicopter visibility reduction below 1 SM NA. Circling NA for Cat C south of Rwy 7-25. When local altimeter setting not received, use Abingdon altimeter setting and increase all MDAs 80 feet. Circling NA for Cats B and C when using Abingdon altimeter setting. Procedure NA at night.

MISSED APPROACH:
Climbing left turn to 6200 direct POGGO and hold.

AWOS-3
126.225

TRI-CITY APP CON ★
134.425 349.0

UNICOM
122.7 (CTAF) 0

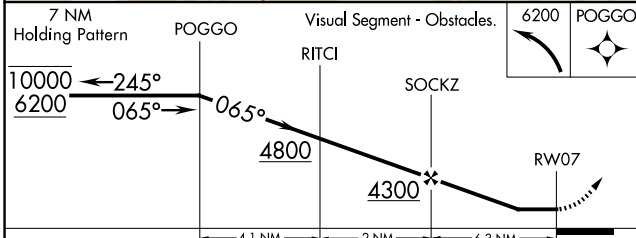


SE-1, 11 JUN 2026 to 09 JUL 2026

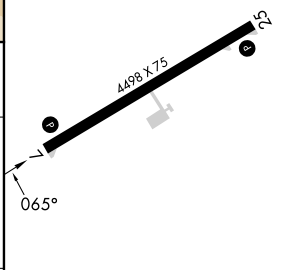
SE-1, 11 JUN 2026 to 09 JUL 2026

Procedure NA for arrivals at ROANS on V35, V53, and T423 southbound.

ELEV 2241 TDZE 2240



CATEGORY	A	B	C	D
LNVA MDA	4040-1¼ 1800 (1800-1¼)	4040-1½ 1800 (1800-1½)	4040-3 1800 (1800-3)	
CIRCLING	4040-1¼ 1799 (1800-1¼)	4260-1½ 2019 (2100-1½)	4260-3 2019 (2100-3)	NA



MIRL Rwy 7-25 0