

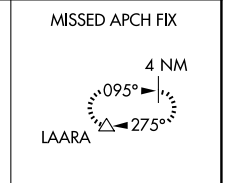
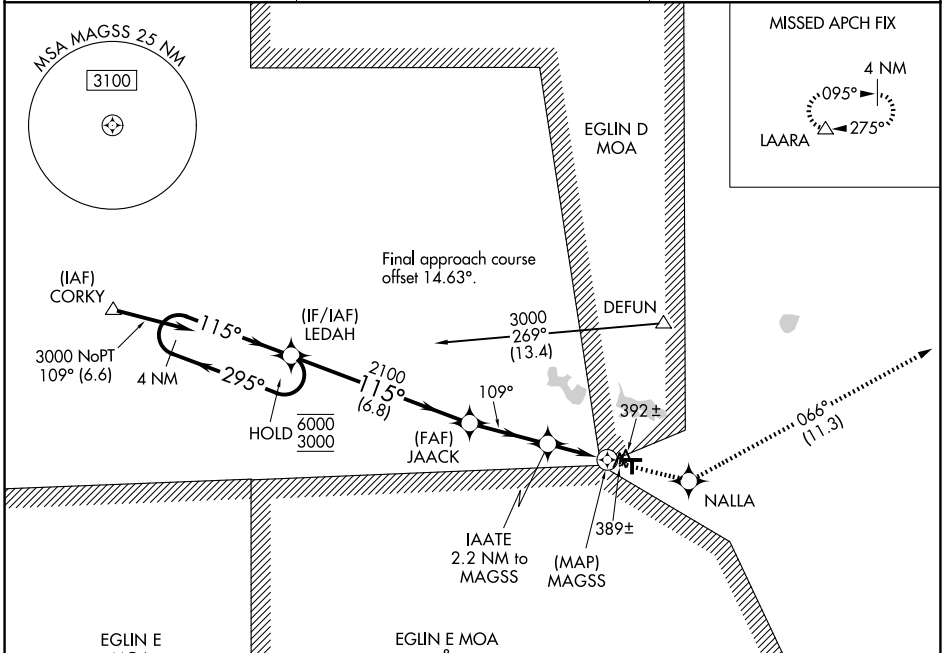
WAAS CH 40441 W09A	APP CRS 109°	Rwy Ldg 4146 TDZE 289 Apt Elev 289
--	------------------------	---

RNAV (GPS) RWY 9

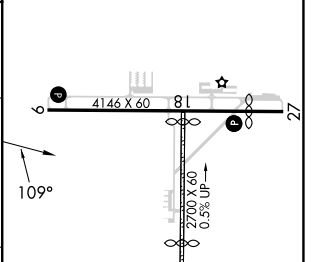
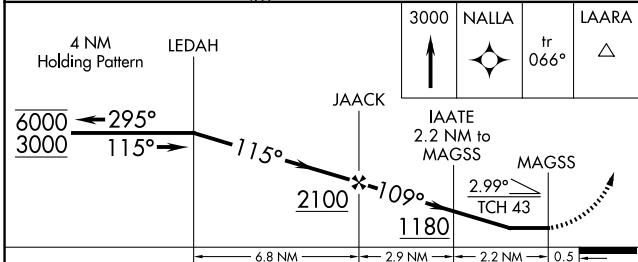
DEFUNIAK SPRINGS (54J)

RNP APCH - GPS.	MISSED APPROACH: Climb to 3000 direct NALLA and on track 066° to LAARA and hold.
<p>▼ Rwy 9 helicopter visibility reduction below 1 SM NA. Circling NA to Rwy 18 and 36. Straight-in, Circling Rwy 9 NA at night.</p>	

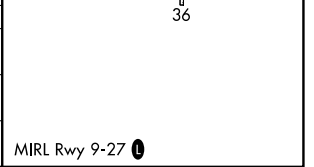
AWOS-3P 118.725	EGLIN APP CON 124.05 284.65	UNICOM 123.05 (CTAF) 0
---------------------------	---------------------------------------	----------------------------------



ELEV 289	TDZE 289
----------	----------



CATEGORY	A	B	C	D
LP MDA	640-1	351 (400-1)		NA
LNAV MDA	660-1	371 (400-1)		NA
CIRCLING	800-1 511 (600-1)	920-1 631 (700-1)		NA



SE-3, 11 JUN 2026 to 09 JUL 2026

SE-3, 11 JUN 2026 to 09 JUL 2026