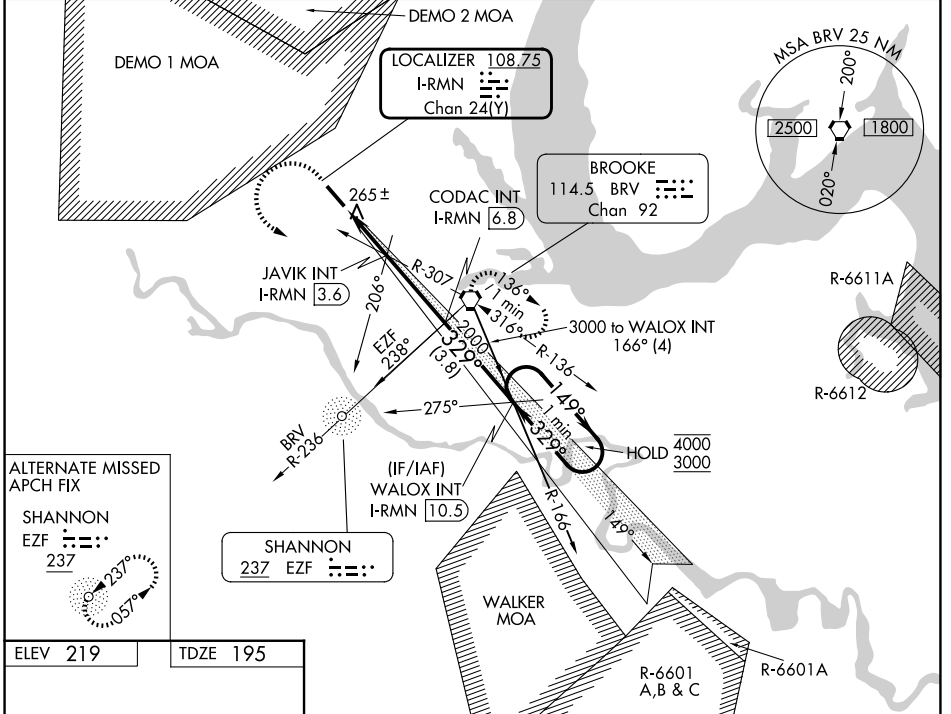


LOC/DME I-RMN	APP CRS	Rwy Ldg	6000
108.75	329°	TDZE	195
Chan 24 (Y)		Apt Elev	219

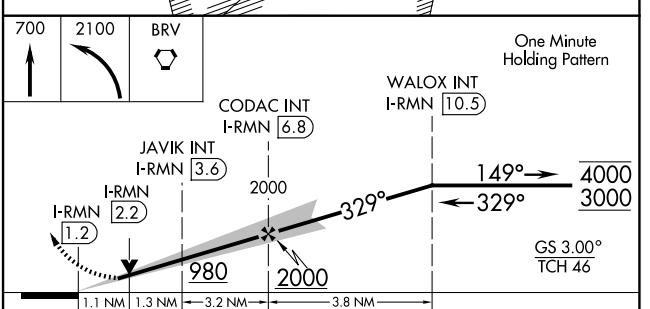
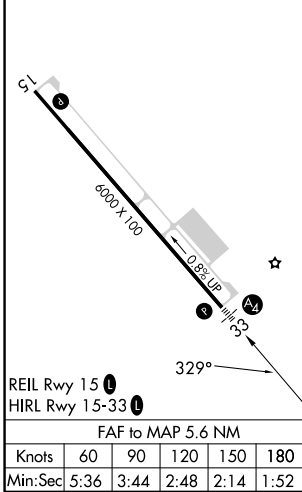
ILS or LOC RWY 33
WASHINGTON EXEC/STAFFORD RGNL (R.MN)

ADF or DME required.	MALS	MISSED APPROACH: Climb to 700 then climbing left turn to 2100 direct BRV VORTAC and hold, continue climb-in-hold to 2100.
Circling Rwy 15 NA at night. Inop table does not apply		

AWOS-3 126.325	QUANTICO APP CON* 127.05 290.375	GCO 135.075	UNICOM 122.725 (CTAF)
--------------------------	--	-----------------------	---------------------------------



ELEV 219	TDZE 195
----------	----------



CATEGORY	A	B	C	D
S-ILS 33		445- ³ / ₄	250 (300- ³ / ₄)	
S-LOC 33		560- ³ / ₄	365 (400- ³ / ₄)	
CIRCLING	720-1	820-1	820-1 ³ / ₄	1040-2 ³ / ₄
	501 (600-1)	601 (700-1)	601 (700-1 ³ / ₄)	821 (900-2 ³ / ₄)

NE-3, 11 JUN 2026 to 09 JUL 2026

NE-3, 11 JUN 2026 to 09 JUL 2026