

| | | |
|--|------------------------|---|
| WAAS CH 81936 W01A | APP CRS 007° | Rwy Ldg 4199 TDZE 492 Apt Elev 492 |
|--|------------------------|---|

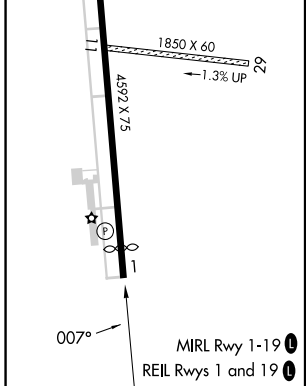
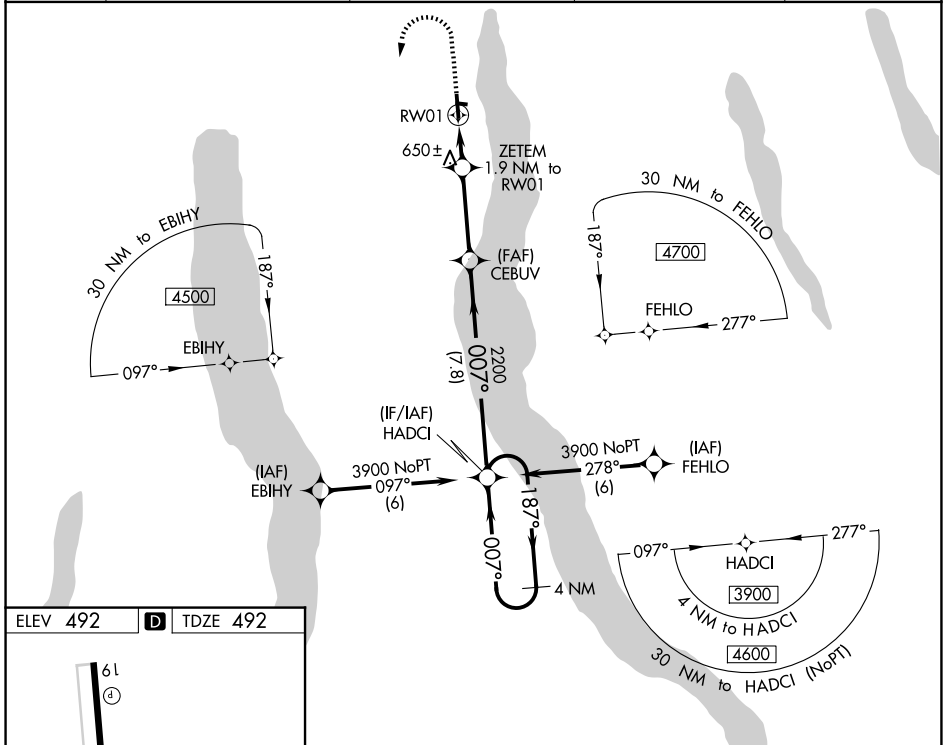
RNAV (GPS) RWY 1

FINGER LAKES RGNL (ØG7)

▽ For uncompensated Baro-VNAV systems, LNAV/VNAV NA below -15°C (5°F) or above 54°C (130°F). Baro-VNAV and VDP NA when using Syracuse altimeter setting. Rwy 1 helicopter visibility reduction below 3/4 SM NA. DME/DME RNP-0.3 NA. When local altimeter setting not received, use Syracuse altimeter setting and increase all DA 86 feet and all visibility 1/4 SM, increase all MDA 100 feet.

△ NA MISSED APPROACH: Climb to 1000 then climbing left turn to 3900 direct HADCI and hold, continue climb-in-hold to 3900.

| | | | | |
|------------------------|--|---|--|--|
| AWOS-3 120.0 | SYRACUSE APP CON 126.125 269.125 | ROCHESTER APP CON 119.55 269.6 (W-NW) | ELMIRA APP CON ★ 124.3 257.8 (SW-SE) | UNICOM 122.8 (CTAF) Ø |
|------------------------|--|---|--|--|



| | | | | |
|----------------------------|----------------------|-----------------------|----------------------|--------|
| 1000 | 3900 | HADCI | 4 NM Holding Pattern | |
| * LNAV only | | ZETEM | CEBUV | HADCI |
| * 1.2 NM to 1.9 NM to RW01 | | 2200 | 2200 | 3900 |
| RW01 RW01 | | 1120 | 007° | 187° |
| 1.2 NM | | 0.7 NM | 3.3 NM | 7.8 NM |
| CATEGORY | A | B | C | D |
| LPV DA | 742-7/8 | 250 (300-7/8) | | NA |
| LNAV/VNAV DA | 959-1 1/8 | 467 (500-1 1/8) | | NA |
| LNAV MDA | 900-1 | 408 (500-1) | | NA |
| CIRCLING | 980-1 488 (500-1) | 1180-1 688 (700-1) | | NA |

NE-2, 11 JUN 2026 to 09 JUL 2026

NE-2, 11 JUN 2026 to 09 JUL 2026