

APP CRS	Rwy Idg	4156
082°	TDZE	1618
	Apt Elev	1635

RNAV (GPS) RWY 8

LEXINGTON (9S9)

RNP APCH - GPS.

NA Circling Cat D NA when using HRI altimeter setting. When local altimeter not received, use HRI altimeter setting and increase all MDAs 220 feet and LNAV visibility Cat C ½ SM, and Circling visibility Cats A and B ¼ SM. Procedure NA at night. Rwy 8 helicopter visibility reduction below 1 SM NA.

MISSED APPROACH: Climbing left turn to 4400 direct CELIB and hold.

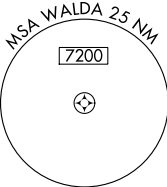
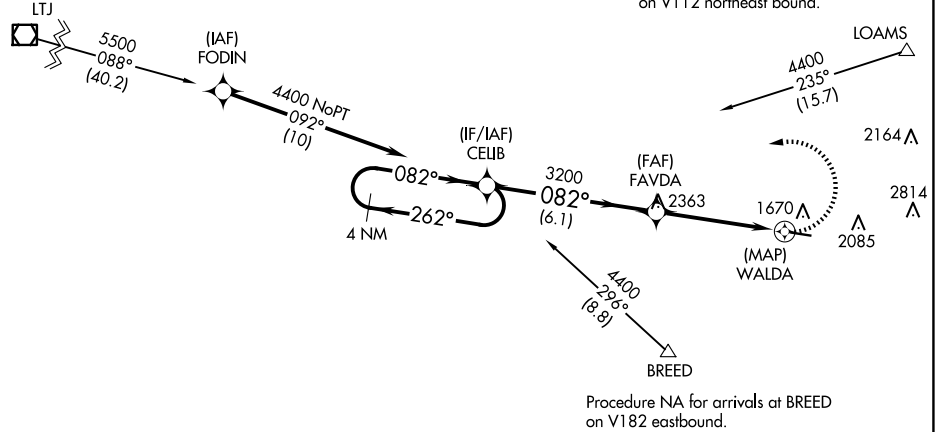
AWOS-3
134.475

SEATTLE CENTER
132.6 269.35

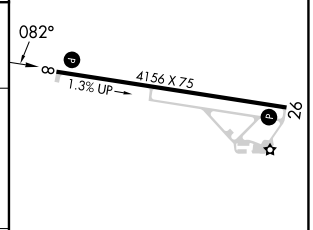
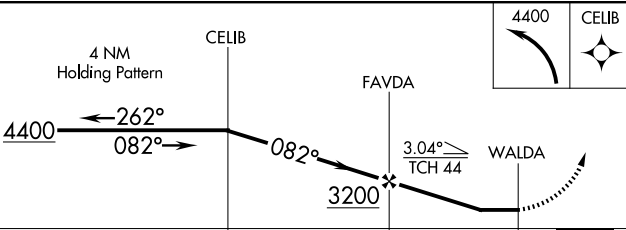
CTAF
122.9 0

Procedure NA for arrival on LTJ VOR/DME airway radials 032 CW 116.

CLICKITAT



ELEV 1635	TDZE 1618
-----------	-----------



CATEGORY	A	B	C	D
LNAV MDA	2120-1	502 (500-1)	2120-1½	502 (500-1½)
CIRCLING	2380-1 745 (800-1)	2460-1¼ 825 (900-1¼)	2700-3 1065 (1100-3)	3180-3 1545 (1600-3)

MIRL Rwy 8-26 **0**
REIL Rws 8 and 26 **0**

NW-1, 11 JUN 2026 to 09 JUL 2026

NW-1, 11 JUN 2026 to 09 JUL 2026