

APP CRS	Rwy Ldg	5510
175°	TDZE	4041
	Apt Elev	4044

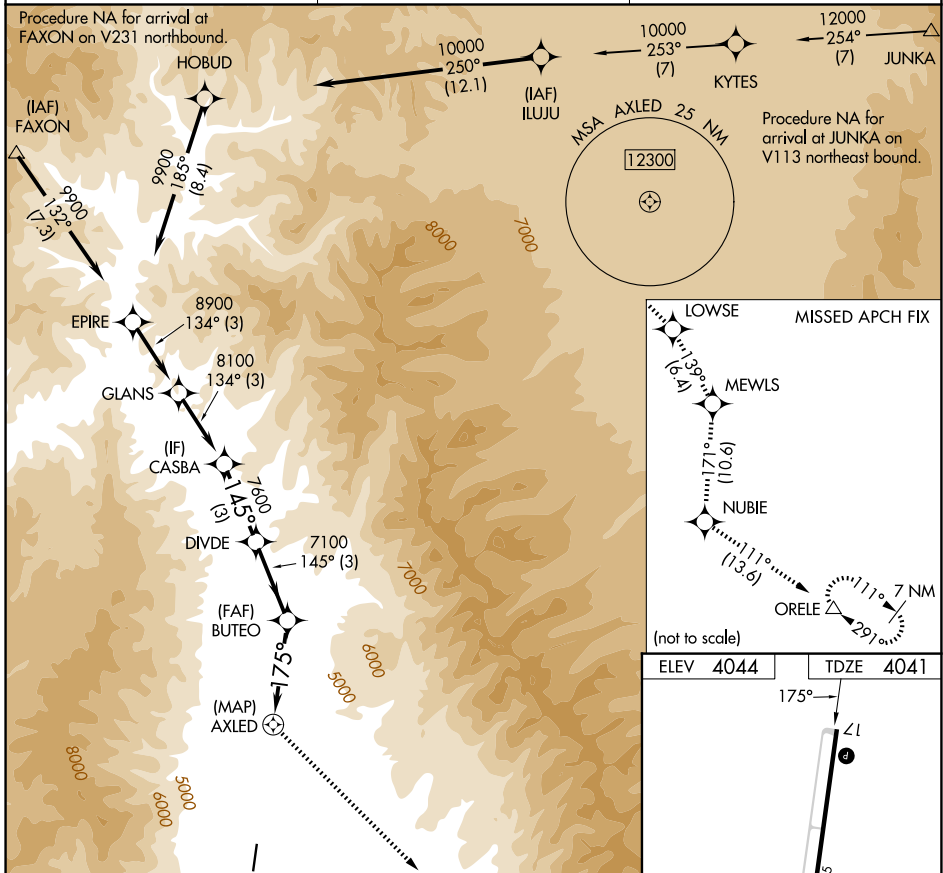
RNAV (GPS) RWY 17

LEMHI COUNTY (SMN)

NA
-12°C
 DME/DME RNP-0.3 NA. Night landing: Rwy 35 NA.
 Circling NA for Cats B and C east of Rwy 17-35.
 Helicopter visibility reduction below 3/4 SM NA.

MISSED APPROACH: Climb to 13600 direct LOWSE and track 139° to MEWLS and track 171° to NUBIE and track 111° to ORELE and hold, continue climb-in-hold to 13600.

AWOS-3PT 135.075	SALT LAKE CENTER 132.4 338.3	UNICOM 122.8 (CTAF)
----------------------------	--	-------------------------------



NW-1, 11 JUN 2026 to 09 JUL 2026

NW-1, 11 JUN 2026 to 09 JUL 2026

13600	LOWSE	MEWLS	BUTEO		DIVDE	CASBA
↑	✦	✦	✦		✦	✦
	tr		139°			
			3.50°		145°	
			TCH 55		7600	8100
			175°		7100	
			4.3 NM		3.8 NM	3 NM
CATEGORY	A	B	C	D		
RNAV MDA	5740-5 1699 (1700-5)			NA		
CIRCLING	5740-5 1696 (1700-5)		6180-5 2136 (2200-5)		NA	

