

WAAS CH 42909 W36A	APP CRS 359°	Rwy Ldg TDZE Apt Elev	5000 54 55
--	------------------------	-----------------------------	---------------------------------------

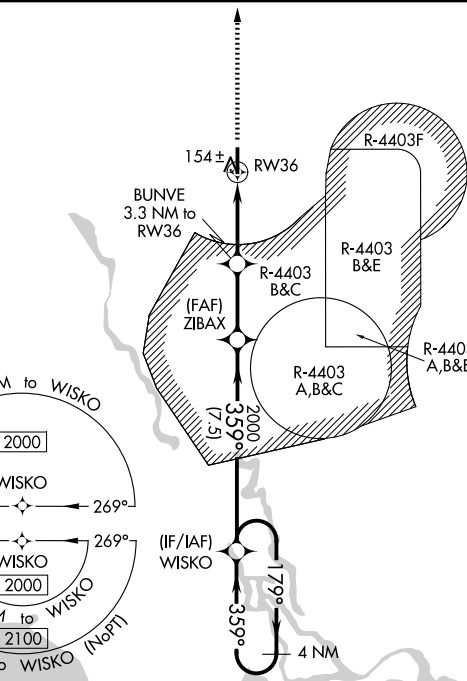
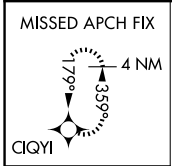
RNAV (GPS) RWY 36

PICAYUNE MUNI (MJJ)

⚠ For uncompensated Baro-VNAV systems, LNAV/VNAV NA below -1.5°C (5°F) or above 54°C (130°F). Baro-VNAV and VDP NA when using Stennis Intl altimeter setting. DME/DME RNP-0.3 NA. Helicopter visibility reduction below 3/4 SM NA. Procedure NA when R-4403 A, B, C, or E is active. When local altimeter setting not received, use Stennis Intl altimeter setting; increase LPV DA to 338 and all Cats visibility 1/8 mile; increase LNAV/VNAV DA to 374 and all Cats visibility 1/8 mile; increase all MDA 40 feet and LNAV Cats C and D visibility 1/8 mile, and Circling Cat C visibility 1/4 mile.

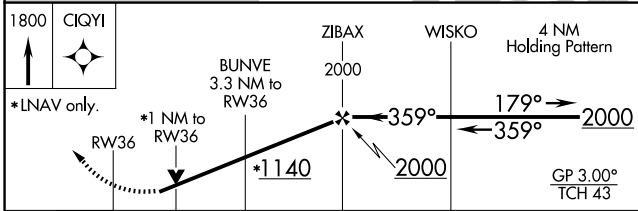
MISSED APPROACH: Climb to 1800 direct CIQYI and hold.

AWOS-3PT 119.075	GULFPORT APP CON* 124.6 354.1	UNICOM 122.8 (CTAF)
----------------------------	---	-------------------------------

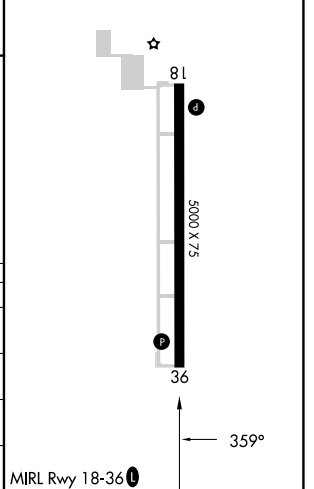


SC-4, 11 JUN 2026 to 09 JUL 2026

SC-4, 11 JUN 2026 to 09 JUL 2026



ELEV 55	TDZE 54
---------	---------



CATEGORY	A	B	C	D
LPV DA		304-7/8	250 (300-7/8)	
LNAV/VNAV DA		340-1	286 (300-1)	
LNAV MDA		420-1	366 (400-1)	
CIRCLING	480-1 425 (500-1)	580-1 525 (600-1)	700-1 3/4 645 (700-1 3/4)	960-3 905 (1000-3)

MRL Rwy 18-36