

APP CRS <b>122°</b>	Rwy Ldg TDZE Apt Elev	<b>4020</b> <b>2426</b> <b>2434</b>
------------------------	-----------------------------	---

# RNAV (GPS) RWY 12

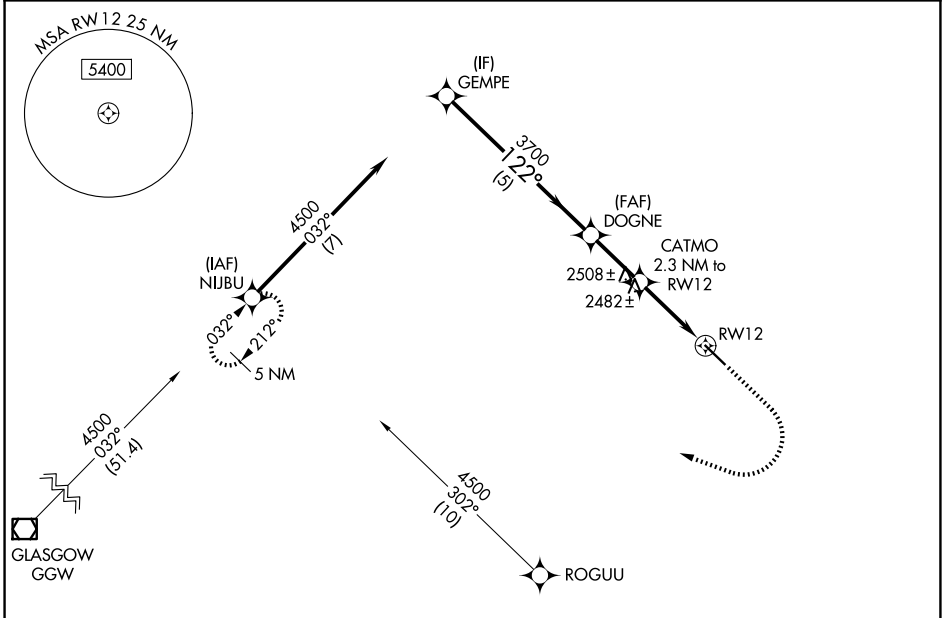
SCOBEY (9S2)

RNP APCH - GPS.

**▼** VDP NA when using PWD altimeter setting. Circling Rwy 30  
**▲** NA at night. When local altimeter setting not received, use PWD altimeter setting and increase all MDAs 120 feet.

**MISSED APPROACH:** Climb to 2900 then climbing right turn to 4500 direct NIJBU and hold.

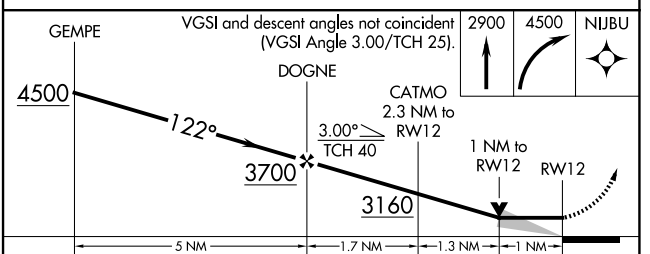
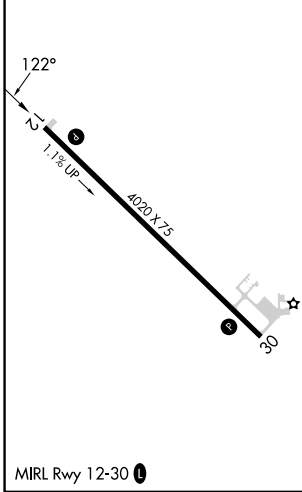
AWOS-3PT <b>128.325</b>	SALT LAKE CITY CENTER <b>126.85 305.2</b>	AUNICOM <b>122.8 (CTAF) ①</b>
----------------------------	--	----------------------------------



NW-1, 11 JUN 2026 to 09 JUL 2026

NW-1, 11 JUN 2026 to 09 JUL 2026

ELEV 2434	TDZE 2426
-----------	-----------



CATEGORY	A	B	C	D
LNAV MDA	2740-1	314 (400-1)		NA
CIRCLING	2940-1	506 (600-1)		NA