

WAAS CH 63221 W17A	APP CRS 168°	Rwy Ldg TDZE Apt Elev	6300 5005 5022
--	------------------------	-----------------------------	---

RNAV (GPS) RWY 17

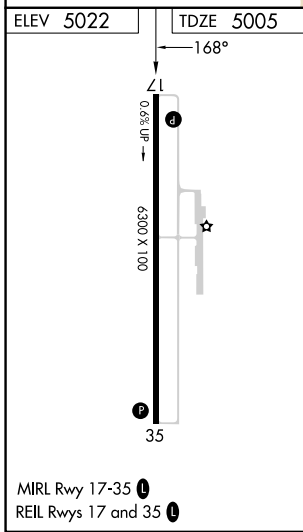
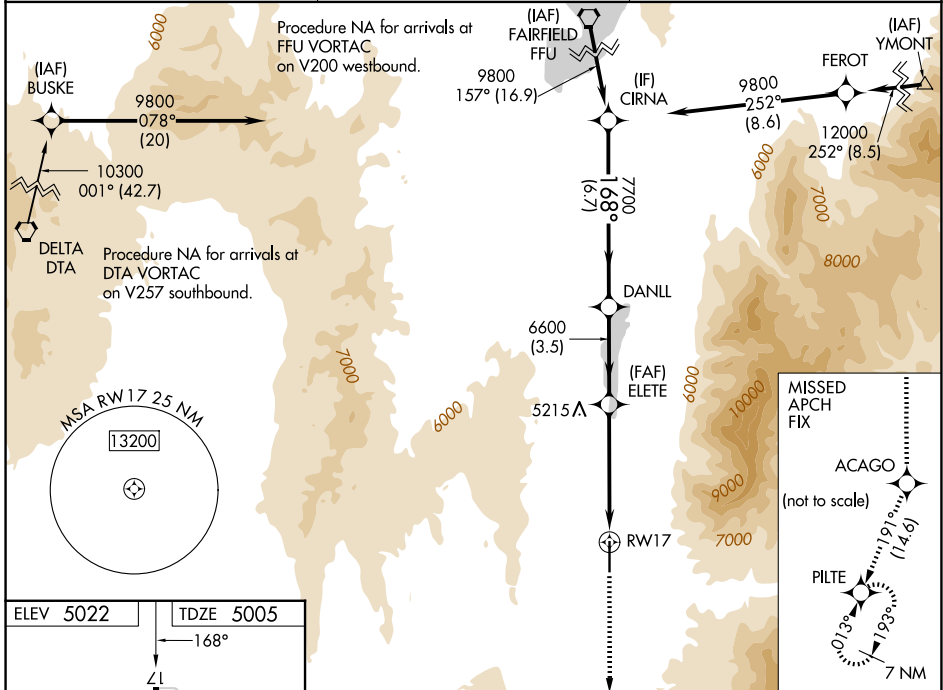
NEPHI MUNI (U14)

RNP APCH - GPS.

Baro-VNAV NA. For uncompensated Baro-VNAV systems, LNAV/VNAV NA below -24°C or above 12°C. When local altimeter setting not received, use PVU altimeter setting: increase LPV DA to 5577 feet and visibility ½ SM; increase LNAV/VNAV DA to 5836 feet and visibility ½ SM; increase all MDAs 160 feet and LNAV and Circling Cats A/B visibilities ½ SM. VDP NA when using PVU altimeter setting.

MISSED APPROACH: Climb to 11400 direct ACAGO and on track 191° to PILTE and hold.

AWOS-3PT 118.275	SALT LAKE CENTER 127.825 239.025	UNICOM 123.075 (CTAF)
----------------------------	--	---------------------------------



11400	ACAGO	tr 191°	PILTE	CIRNA
			ELETE	DANLL
			6600	9800
			2.4 NM to RWY 17	7700
			6600	GP 3.00°
			6.7 NM	TCH 40
CATEGORY	A	B	C	D
LPV DA		5433-1½	428 (500-1½)	
LNAV/VNAV DA		5692-2½	687 (700-2½)	
LNAV MDA	5800-1 795 (800-1)	5800-1¼ 795 (800-1¼)	5800-2½	795 (800-2½)
CIRCLING	5800-1 778 (800-1)	5800-1¼ 778 (800-1¼)		NA

SW-4, 11 JUN 2026 to 09 JUL 2026

SW-4, 11 JUN 2026 to 09 JUL 2026