

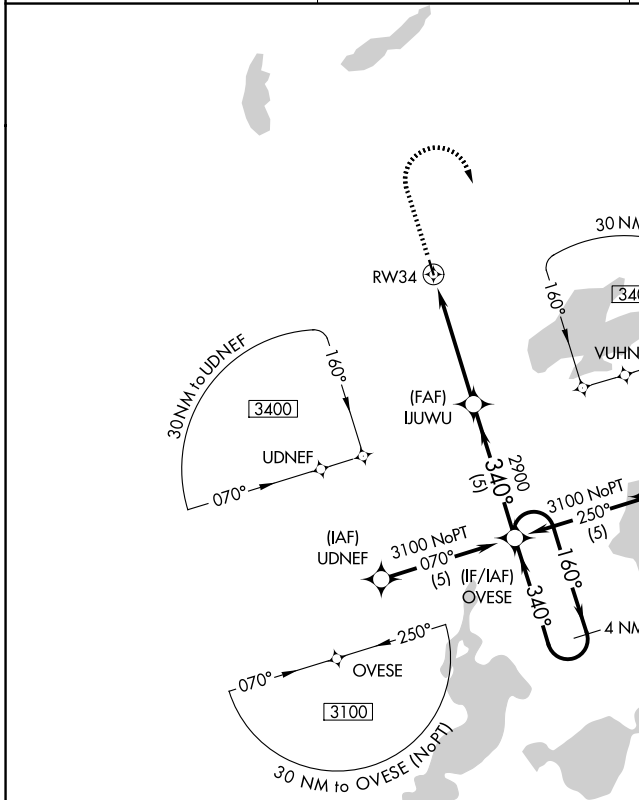
APP CRS	Rwy Ldg	<b>3000</b>
<b>340°</b>	TDZE	<b>1295</b>
	Apt Elev	<b>1295</b>

# RNAV (GPS) RWY 34

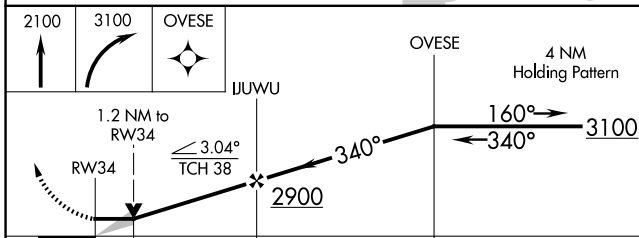
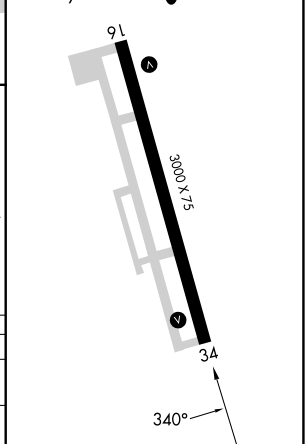
PINE RIVER RGNL (PWC)

<p><b>▽</b> NA GPS or RNP-0.3 required. DME/DME RNP-0.3 NA.</p>	<p>MISSED APPROACH: Climb to 2100 then climbing right turn to 3100 direct OVESE WP and hold.</p>
---	--

<p>AWOS-3PT <b>118.525</b></p>	<p>MINNEAPOLIS CENTER <b>118.05 239.0</b></p>	<p>CTAF <b>122.9</b> <b>①</b></p>
------------------------------------	---	---------------------------------------



ELEV 1295	TDZE 1295
MIRL Rwy 16-34 <b>①</b>	
REIL Rwys 16 and 34 <b>①</b>	



CATEGORY	A	B	C	D
LNAV MDA	1700-1	405 (500-1)	1700-1¼ 405 (500-1¼)	NA
CIRCLING	1760-1 465 (500-1)	1840-1 545 (600-1)	1840-1½ 545 (600-1½)	NA

NC-1, 11 JUN 2026 to 09 JUL 2026

NC-1, 11 JUN 2026 to 09 JUL 2026