

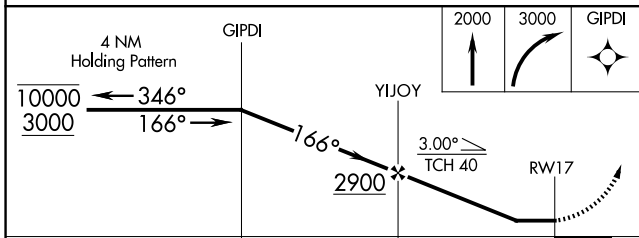
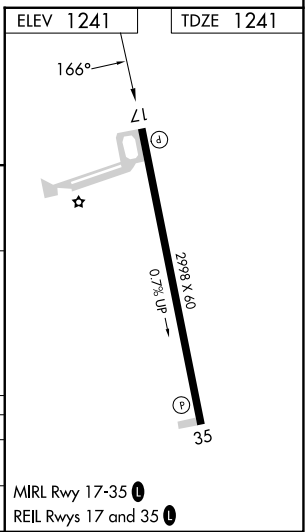
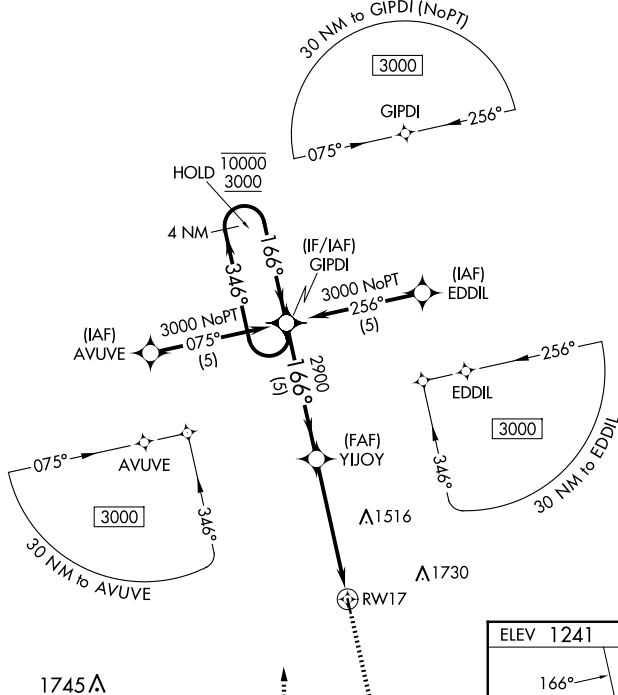
APP CRS	Rwy Idg	2998
166°	TDZE	1241
	Apt Elev	1241

RNAV (GPS) RWY 17

SALEM MEML (K33)

RNP APCH - GPS.	MISSED APPROACH: Climb to 2000 then climbing right turn to 3000 direct GIPDI and hold.
<p>V Rwy 17 helicopter visibility reduction below 3/4 SM NA. When VIH</p> <p>Δ NA altimeter setting not received, procedure NA. Use VIH altimeter setting.</p>	

VIH ASOS 119.025	KANSAS CITY CENTER 128.35 284.675	CTAF 122.9
----------------------------	---	----------------------



CATEGORY	A	B	C	D
LNAV MDA	1800-1	559 (600-1)	NA	
CIRCLING	1840-1 599 (600-1)	1940-1 699 (700-1)	NA	

MIRL Rwy 17-35 **Ⓛ**
REIL Rwy 17 and 35 **Ⓛ**

NC-3, 11 JUN 2026 to 09 JUL 2026

NC-3, 11 JUN 2026 to 09 JUL 2026