

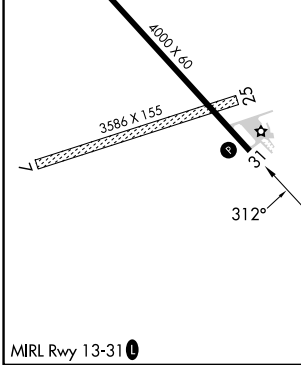
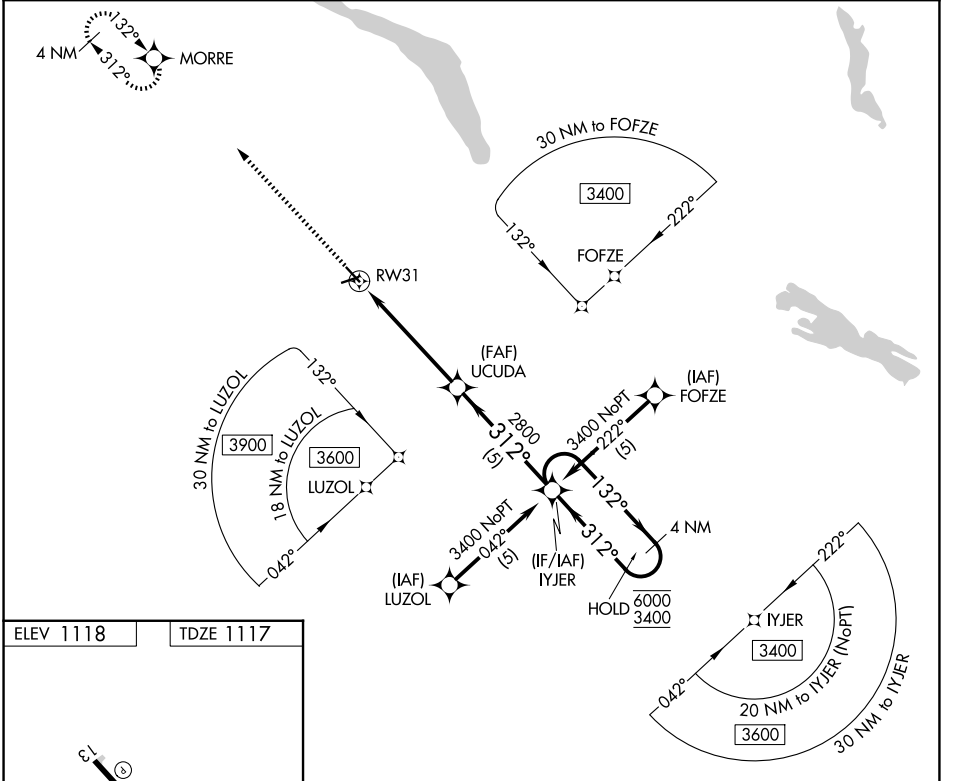
APP CRS	Rwy Ldg	4000
312°	TDZE	1117
	Apt Elev	1118

RNAV (GPS) RWY 31

MILBANK MUNI (1D1)

RNP APCH - GPS.	<p>▽ Rwy 31 helicopter visibility reduction below 3/4 SM NA. Circling Rwy 7, 25 NA. When local altimeter setting not received, use Ortonville altimeter setting and increase all MDAs 20 feet. VDP NA when using Ortonville Muni/Martinson Fld altimeter setting.</p>	<p>MISSED APPROACH: Climb to 3400 direct MORRE and hold.</p>

AWOS-3P 118.9	MINNEAPOLIS CENTER 128.5 306.2	AUNICOM 122.8 (CTAF) 0
-------------------------	--	----------------------------------



3400	MORRE	Visual Segment - Obstacles.			
		UCUDA	IYJER	4 NM Holding Pattern	
		1.8 NM to RW31	132° → 6000	← 312° 3400	
		1.8 NM	3.4 NM	5 NM	
CATEGORY	A	B	C	D	
LNAV MDA	1720-1	603 (700-1)	NA		
CIRCLING	1720-1	602 (700-1)	NA		

NC-1, 11 JUN 2026 to 09 JUL 2026

NC-1, 11 JUN 2026 to 09 JUL 2026