

| | | |
|--|------------------------|---|
| WAAS CH 56437 W07A | APP CRS 068° | Rwy Ldg 4899 TDZE 661 Apt Elev 661 |
|--|------------------------|---|

RNAV (GPS) RWY 7

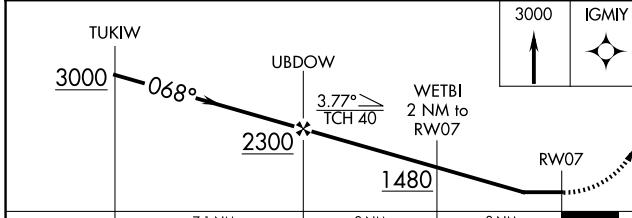
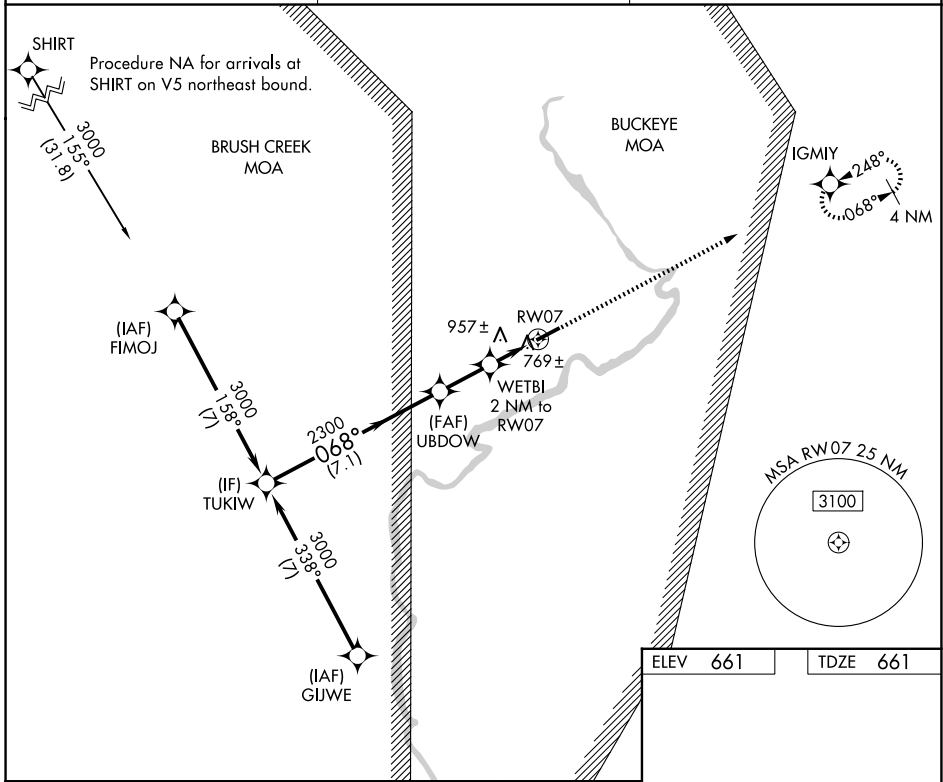
PIKE COUNTY (EOP)

RNP APCH - GPS

▼ Rwy 7 helicopter visibility reduction below 1 SM NA. Straight-in Rwy 7 NA at night. Circling Rwy 7 NA at night. When local altimeter setting not received, use PMH altimeter setting and increase all MDAs 60 feet and LNAV visibility Cat C 1/8 SM, and LP visibility Cat C 1/8 SM, and Circling all visibilities 1/4 SM.

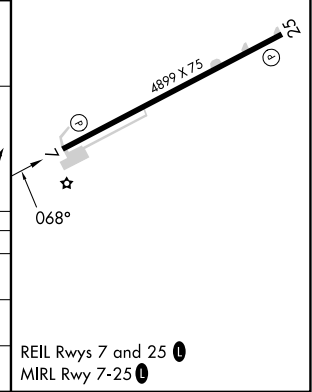
⚠ NA MISSED APPROACH: Climb to 3000 direct IGMYY and hold.

| | | |
|---------------------------|---|---------------------------------|
| AWOS-3PT 121.45 | INDIANAPOLIS CENTER 135,575 290.5 | UNICOM 123.0 (CTAF) 0 |
|---------------------------|---|---------------------------------|



| | |
|----------|----------|
| ELEV 661 | TDZE 661 |
|----------|----------|

| CATEGORY | A | B | C | D |
|----------|-----------------------|-----------------------|-------------------------------|----|
| LP MDA | 1020-1 | | 359 (400-1) | |
| LNAV MDA | 1220-1 | 559 (600-1) | 1220-1 1/8 559 (600-1 1/8) | NA |
| CIRCLING | 1440-1 779 (800-1) | 1460-1 799 (800-1) | 1500-2 1/2 839 (900-2 1/2) | NA |



EC-2, 11 JUN 2026 to 09 JUL 2026

EC-2, 11 JUN 2026 to 09 JUL 2026