

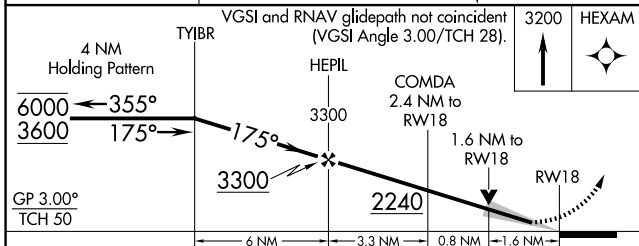
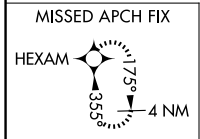
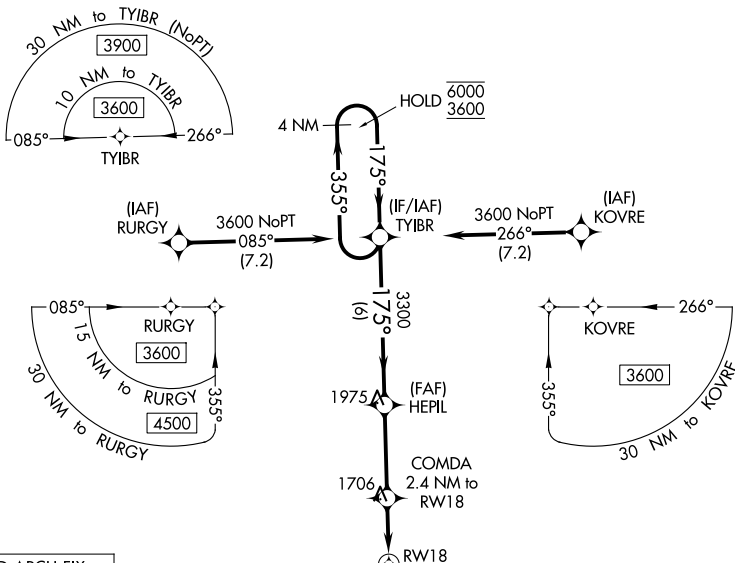
WAAS CH 86317 W18A	APP CRS 175°	Rwy Ldg TDZE Apt Elev	4200 1435 1435
---------------------------------	------------------------	-----------------------------	---

RNAV (GPS) RWY 18

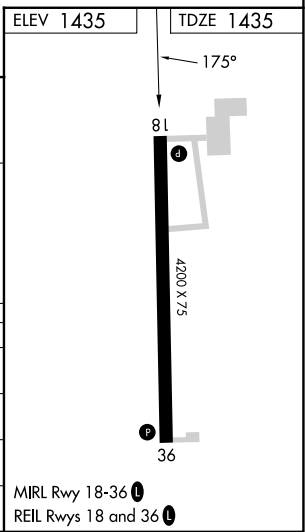
QUENTIN AANENSON FLD (L.Y.V)

RNP APCH-GPS.	MISSED APPROACH: Climb to 3200 direct HEXAM and hold.
<p>⚠ For uncompensated Baro-VNAV systems, LNAV/VNAV NA below -17°C or above 54°C.</p>	

AWOS-3 119.825	SIOUX FALLS APP CON * 125.8 284.725	UNICOM 122.7(CTAF) 0
--------------------------	---	--------------------------------



CATEGORY	A	B	C	D
LPV DA		1635-1	200 (200-1)	
LNAV/VNAV DA		1847-1 $\frac{1}{8}$	412 (500-1 $\frac{1}{8}$)	
LNAV MDA	1960-1	525 (600-1)	1960-1 $\frac{1}{2}$	525 (600-1 $\frac{1}{2}$)
CIRCLING	1960-1 525 (600-1)	2160-1 725 (800-1)	2360-2 $\frac{3}{4}$ 925 (1000-2 $\frac{3}{4}$)	2360-3 925 (1000-3)



NC-1, 11 JUN 2026 to 09 JUL 2026

NC-1, 11 JUN 2026 to 09 JUL 2026