

WAAS CH <b>53526</b> <b>W02A</b>	APP CRS <b>016°</b>	Rwy Ldg TDZE Apt Elev	<b>4000</b> <b>341</b> <b>348</b>
--	------------------------	-----------------------------	---

# RNAV (GPS) RWY 2

HOUSTON COUNTY (DKR)

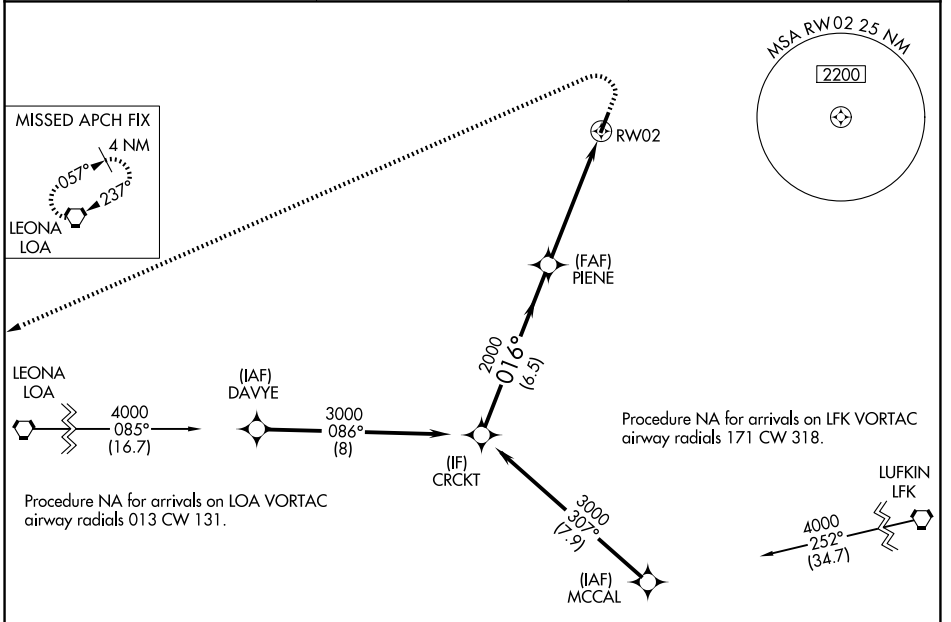
**⚠** DME/DME RNP-0.3 NA. When local altimeter setting not received, use Palestine altimeter setting and increase all MDA 100 feet.  
Procedure NA at night. Helicopter visibility reduction below 1 SM NA.

**MISSED APPROACH:** Climb to 1000 then climbing left turn to 4000 direct LOA VORTAC and hold.

AWOS-3PT  
**118.775**

HOUSTON CENTER  
**134.8 269.6**

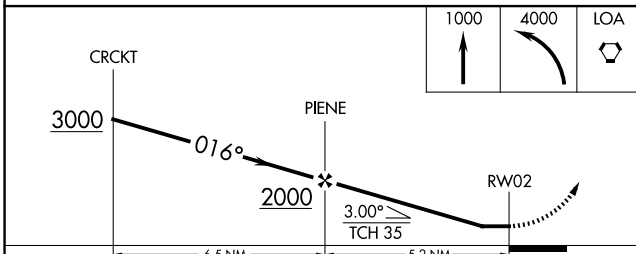
CTAF  
**122.9 0**



SC-5, 11 JUN 2026 to 09 JUL 2026

SC-5, 11 JUN 2026 to 09 JUL 2026

ELEV 348	TDZE 341
----------	----------



CATEGORY	A		B		C		D
	LP	MDA	LP	MDA	LP	MDA	NA
LP MDA	820-1	479 (500-1)					NA
LNAV MDA	840-1	499 (500-1)					NA
CIRCLING	880-1 532 (600-1)	980-1 632 (700-1)					NA

