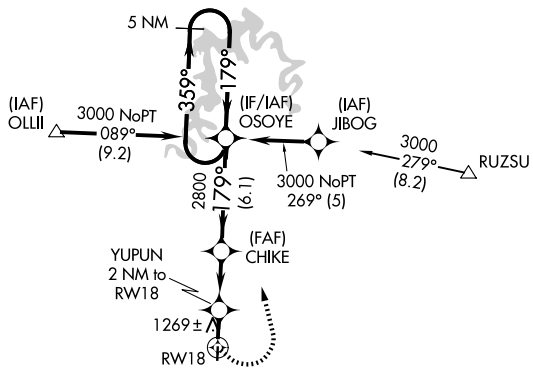


APP CRS	Rwy Ldg	<b>4000</b>
<b>179°</b>	TDZE	<b>1092</b>
	Apt Elev	<b>1092</b>

# RNAV (GPS) RWY 18

BOLIVAR MUNI (M17)

RNP APCH - GPS.		MISSED APPROACH: Climbing left turn to 3000 direct OSOYE and hold.
<p><b>▼</b> Rwy 18 helicopter visibility reduction below 1 SM NA.</p> <p><b>▲ NA</b> Use Springfield-Branson Ntl altimeter setting. Straight-in and Circling Rwy 18 NA at night.</p>	<p>SPRINGFIELD APP CON</p> <p><b>124.95 318.2</b></p>	
		<p>UNICOM</p> <p><b>123.0 (CTAF) 1</b></p>

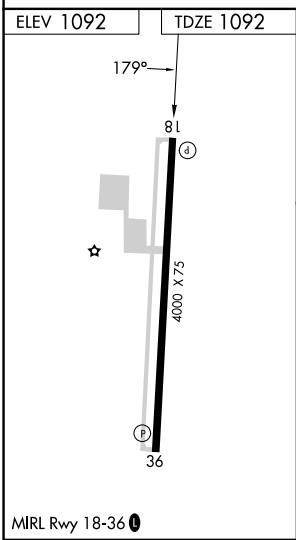


NC-3, 11 JUN 2026 to 09 JUL 2026

NC-3, 11 JUN 2026 to 09 JUL 2026



Holding not required for arrivals on SGF VORTAC airway radials 075 CW 272.



MIRL Rwy 18-36 **1**

ELEV 1092	TDZE 1092		
	<p>3000 OSOYE</p> <p>VGSI and descent angles not coincident (VGSI Angle 3.75/TCH 40).</p>	<p>5 NM Holding Pattern</p>	
	<p>YUPUN 2 NM to RWY 18</p> <p>CHIKE</p> <p>OSOYE</p>	<p>3000</p> <p>1760</p> <p>2800</p>	<p>359°</p> <p>179°</p>
	<p>2 NM</p> <p>3.2 NM</p> <p>6.1 NM</p>		
CATEGORY	A	B	C
LNAV MDA	1600-1	508 (600-1)	1600-1 3/8 508 (600-1 3/8)
CIRCLING	1660-1	568 (600-1)	1740-1 3/4 648 (700-1 3/4)