

WAAS CH <b>53633</b> <b>W17A</b>	APP CRS <b>176°</b>	Rwy Ldg TDZE Apt Elev	<b>3005</b> <b>1623</b> <b>1623</b>
--	------------------------	-----------------------------	---

# RNAV (GPS) RWY 17

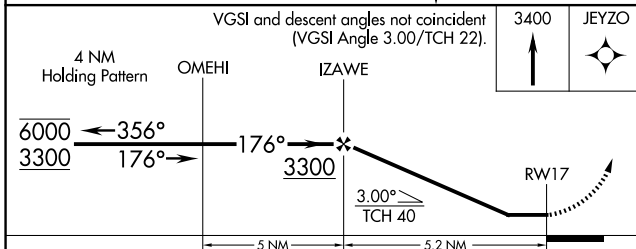
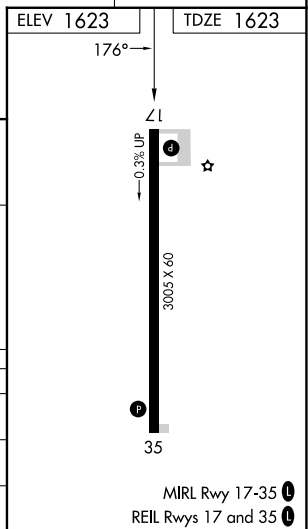
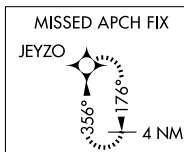
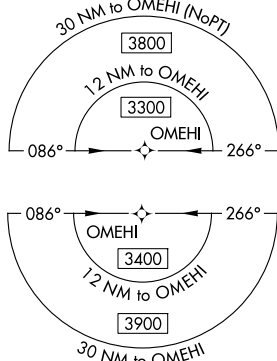
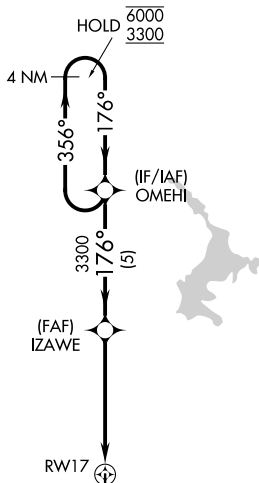
SLAYTON MUNI (DVP)

RNP APCH - GPS.

**⚠** When local altimeter setting not received, use TKC altimeter setting and increase all MDAs 100 feet. Procedure NA at night. Rwy 17 helicopter visibility reduction below 1 SM NA.

MISSED APPROACH: Climb to 3400 direct JEYZO and hold.

AWOS-3 <b>118.55</b>	MINNEAPOLIS CENTER <b>132.05 317.4</b>	CTAF <b>122.9 0</b>
-------------------------	---	------------------------



CATEGORY	A	B	C	D
LP MDA	2100-1	477 (500-1)		NA
LNAV MDA	2120-1	497 (500-1)		NA
CIRCLING	2120-1 497 (500-1)	2300-1 677 (700-1)		NA

NC-1, 11 JUN 2026 to 09 JUL 2026

NC-1, 11 JUN 2026 to 09 JUL 2026