

APP CRS **125°**
 Rwy Ldg **4196**
 TDZE **1746**
 Apt Elev **1747**

RNAV (GPS) RWY 14

LAKE PLACID (LKP)

RNP APCH - GPS.

- Rwy 14 helicopter visibility reduction below 1 SM NA.
- NA Use Saranac Lake altimeter setting.
- 31°C Procedure NA at night.

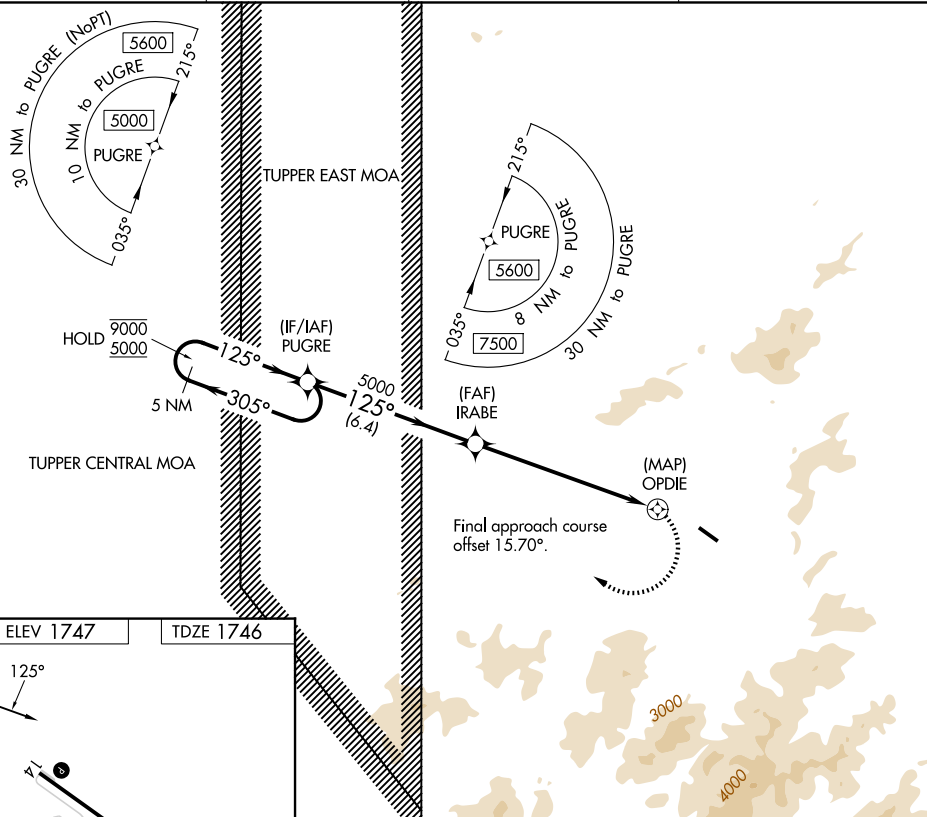
MISSED APPROACH: Climbing right turn to 5000 direct PUGRE and hold.

AWOS-3PT
118.025

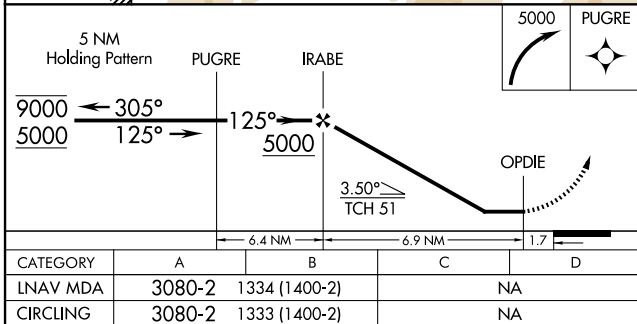
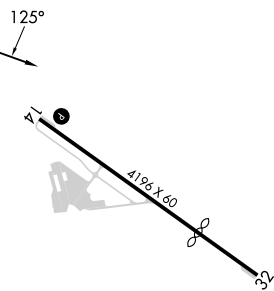
SLK ASOS
124.175

BOSTON CENTER
120.35 342.25

UNICOM
122.8 (CTAF)



ELEV 1747 TDZE 1746



MIRL Rwy 14-32

NE-2, 11 JUN 2026 to 09 JUL 2026

NE-2, 11 JUN 2026 to 09 JUL 2026