

APP CRS 169°	Rwy Idg 4000
	TDZE 323
	Apt Elev 323

RNAV (GPS) RWY 17

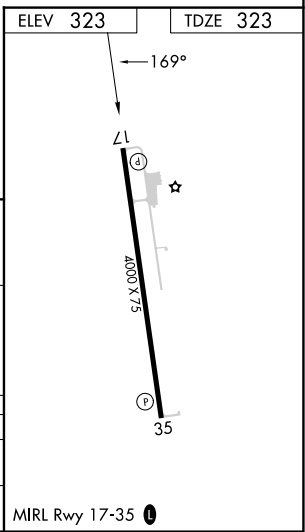
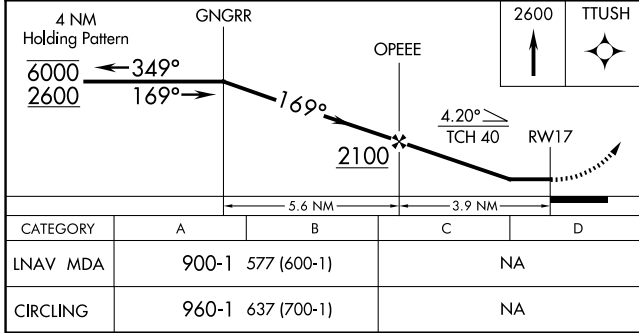
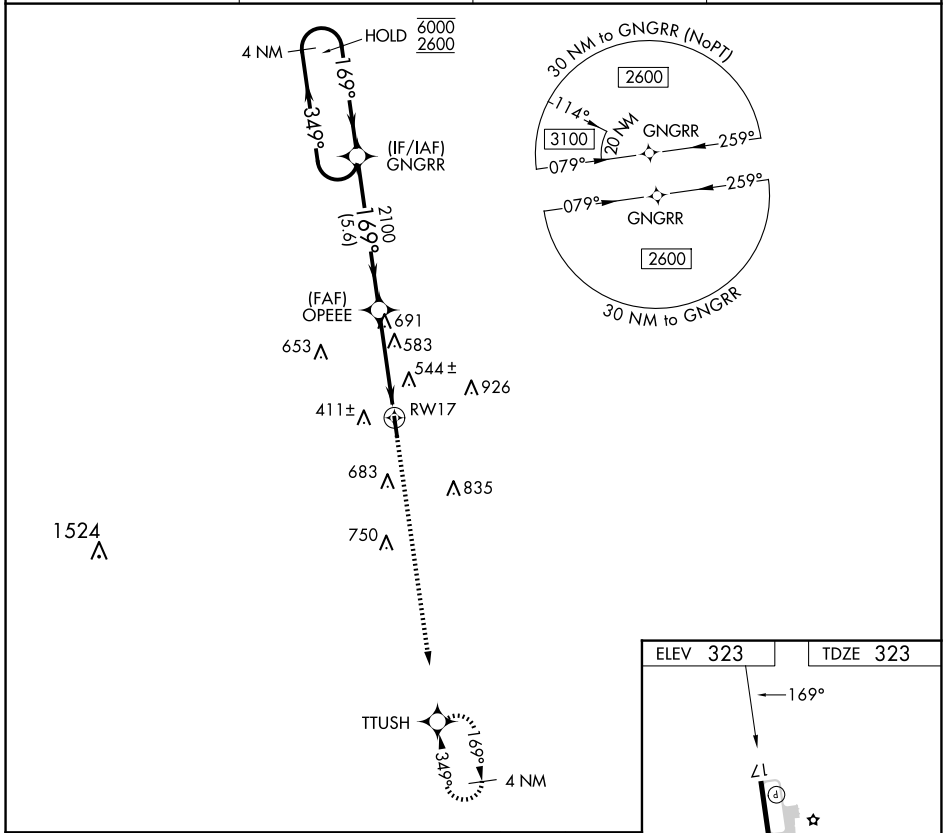
SMITHVILLE CRAWFORD MUNI (84R)

RNP APCH - GPS.

▼ Rwy 17 helicopter visibility reduction below 1 SM NA.
▲ NA Straight-in Rwy 17 NA at night, Circling Rwy 17 NA at night.

MISSED APPROACH: Climb to 2600 direct TTUSH and hold.

GYB AWOS-3 119.225	AUSTIN APP CON 120.875 270.25	CTAF 122.9	123.30
------------------------------	---	----------------------	---------------



SC-3, 11 JUN 2026 to 09 JUL 2026

SC-3, 11 JUN 2026 to 09 JUL 2026