

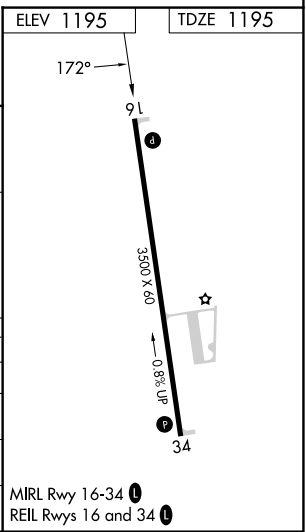
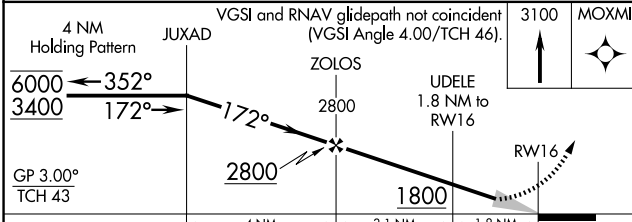
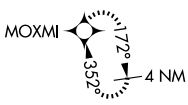
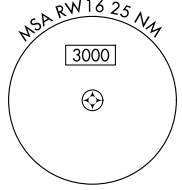
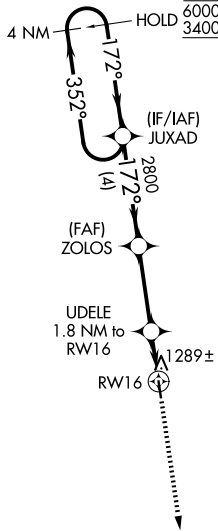
WAAS CH 97329 W16A	APP CRS 172°	Rwy Ldg 3500
		TDZE 1195
		Apt Elev 1195

RNAV (GPS) RWY 16

HOUSTON MEML (M48)

RNP APCH-GPS.	MISSED APPROACH: Climb to 3100 direct MOXMI and hold.
<p>▼ Baro-VNAV NA. Use Fort Leonard Wood altimeter setting, when not received use West Plains altimeter setting.</p> <p>▲ NA</p>	

TBN ASOS 118.7 229.4	KANSAS CITY CENTER 128.35 284.675	CTAF 122.90
--------------------------------	---	-----------------------



CATEGORY	A	B	C	D
LPV DA	1513-1	318 (400-1)		NA
LNAV/VNAV DA	1513-1	318 (400-1)		NA
LNAV MDA	1620-1	425 (500-1)		NA
CIRCLING	1760-1 565 (600-1)	1880-1 685 (700-1)		NA

MIRL Rwy 16-34
REIL Rwy 16 and 34

NC-3, 11 JUN 2026 to 09 JUL 2026

NC-3, 11 JUN 2026 to 09 JUL 2026