

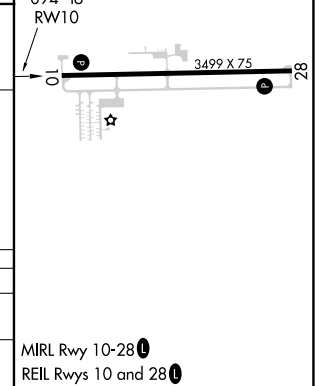
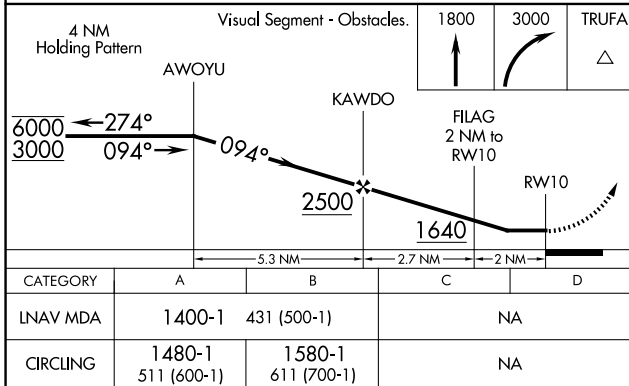
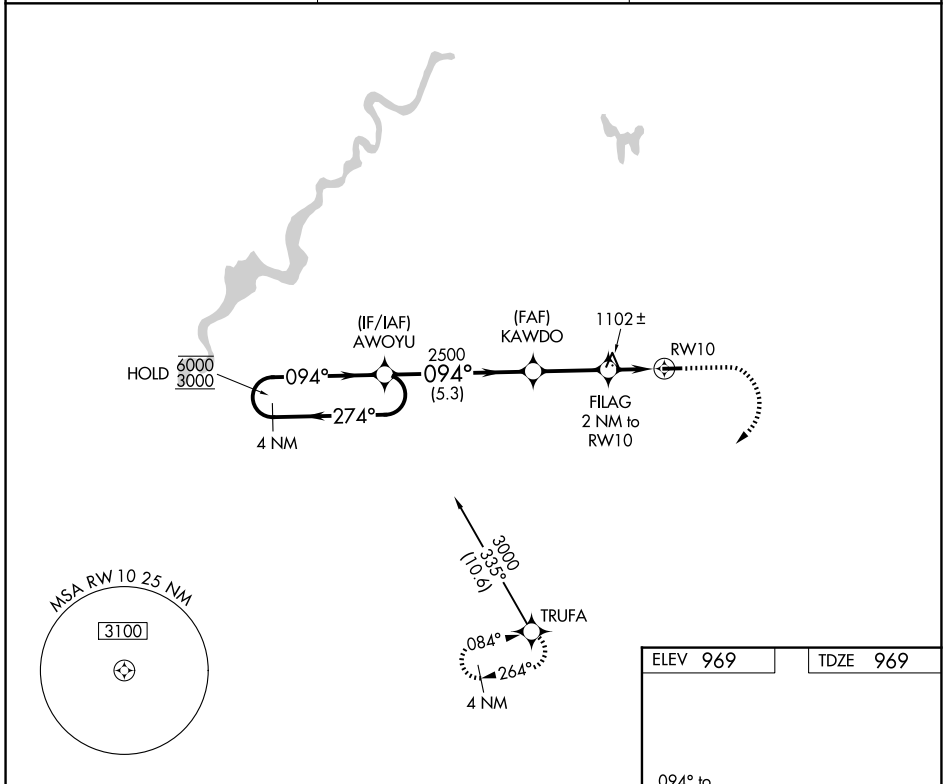
APP CRS	Rwy Ldg	3499
094°	TDZE	969
	Apt Elev	969

RNAV (GPS) RWY 10

LAKEVIEW/GRIFFITH FLD (13C)

RNP APCH.	Procedure NA at night. Rwy 10 helicopter visibility reduction below 1 SM NA. Use Big Rapids altimeter setting.	MISSED APPROACH: Climb to 1800 then climbing right turn to 3000 direct TRUFA and hold.
NA		

RQB AWOS-3P 125.875	GREAT LAKES APP CON * 124.6 257.6	UNICOM 122.8 (CTAF)
-------------------------------	---	-------------------------------



CATEGORY	A	B	C	D
LNVA MDA	1400-1	431 (500-1)	NA	
CIRCLING	1480-1 511 (600-1)	1580-1 611 (700-1)	NA	

EC-1, 11 JUN 2026 to 09 JUL 2026

EC-1, 11 JUN 2026 to 09 JUL 2026