

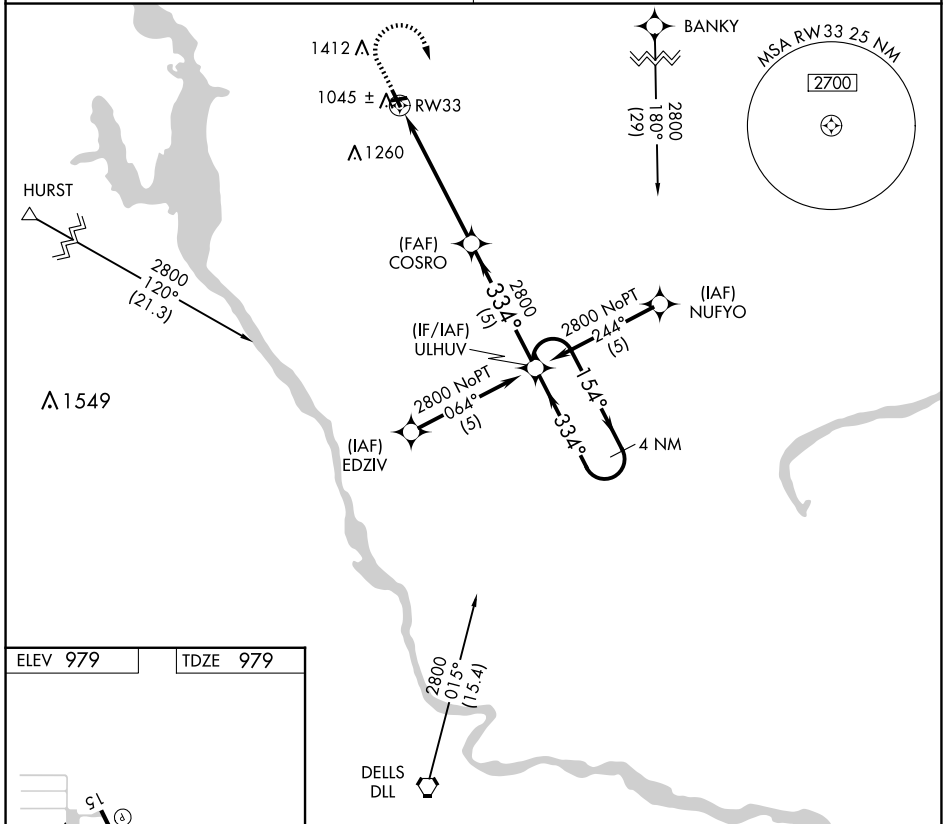
APP CRS	Rwy Idg	<b>3398</b>
<b>334°</b>	TDZE	<b>979</b>
	Apt Elev	<b>979</b>

# RNAV (GPS) RWY 33

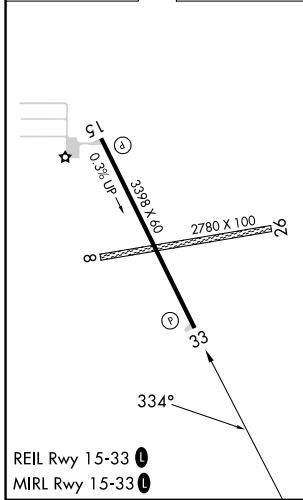
ADAMS COUNTY LEGION FLD (63C)

RNP APCH.	Procedure NA at night. Rwy 33 helicopter visibility reduction below 1 SM NA.	MISSED APPROACH: Climb to 2000 then climbing right turn to 2800 direct ULHUV and hold.
<b>NA</b>	Circling NA to Rwy 8 and 26. Use Baraboo Wisconsin Dells altimeter setting.	

VOLK APP CON★ <b>135.25 244.875</b>	CTAF <b>122.9</b>
--	----------------------

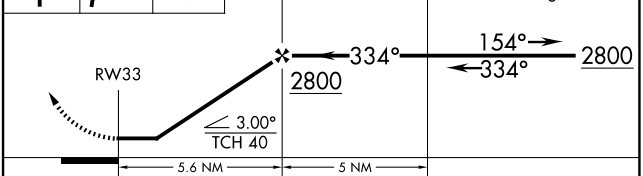


ELEV 979	TDZE 979
----------	----------



REIL Rwy 15-33 **0**  
MIRL Rwy 15-33 **0**

2000	2800	ULHUV	VGSI and descent angles not coincident (VGSI Angle 3.00°/TCH 20).	4 NM Holding Pattern
↑	↷	✧	COSRO	ULHUV



CATEGORY	A	B	C	D
LNAV MDA	1500-1	521 (600-1)		NA
CIRCLING	1640-1 661 (700-1)	1780-1¼ 801 (900-1¼)		NA

EC-3, 11 JUN 2026 to 09 JUL 2026

EC-3, 11 JUN 2026 to 09 JUL 2026