

APP CRS <b>154°</b>	Rwy Ldg TDZE Apt Elev	<b>N/A</b> <b>N/A</b> <b>150</b>
------------------------	--------------------------	--

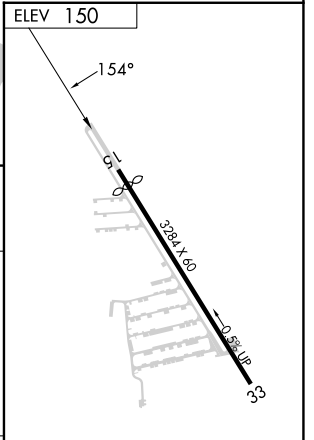
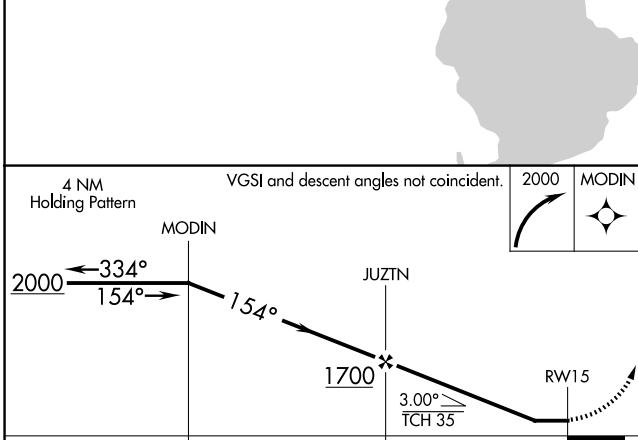
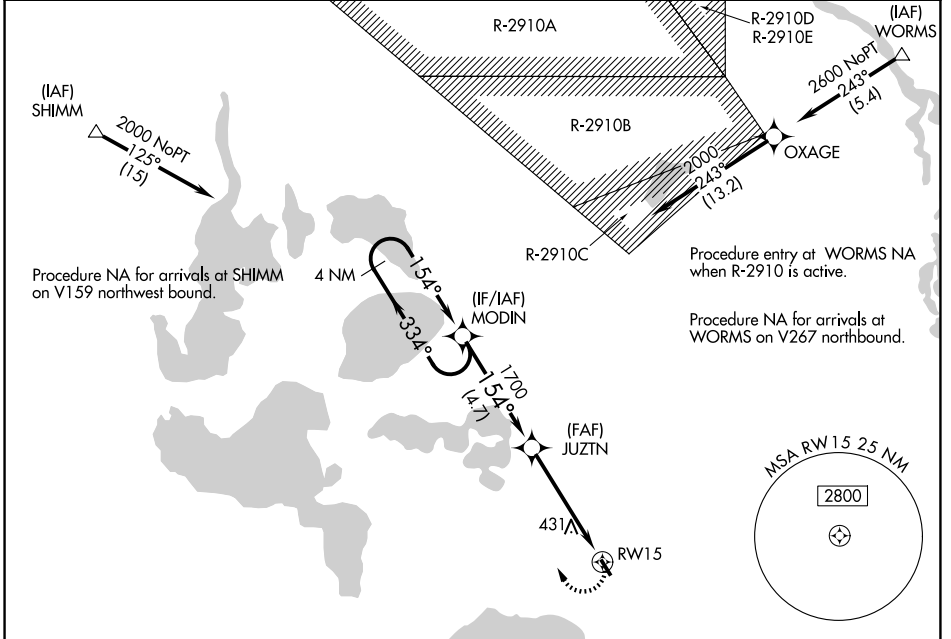
# RNAV (GPS)-A

ORLANDO APOPKA (X04)

**NA** DME/DME RNP-0.3 NA. Procedure NA at night. Visibility reduction by helicopters NA. Use Leesburg Intl altimeter setting; when not received, use Executive altimeter setting.

**MISSED APPROACH:** Climbing right turn to 2000 direct MODIN and hold.

LEE ASOS <b>134.325</b>	ORLANDO APP CON <b>135.3 351.9</b>	UNICOM <b>123.05</b> (CTAF) <b>1</b>
----------------------------	---------------------------------------	---



CATEGORY	A	B	C	D
CIRCLING	780-1 630 (700-1)	840-1 690 (700-1)	NA	

IIRL Rwy 15-33 **1**

SE-3, 11 JUN 2026 to 09 JUL 2026

SE-3, 11 JUN 2026 to 09 JUL 2026