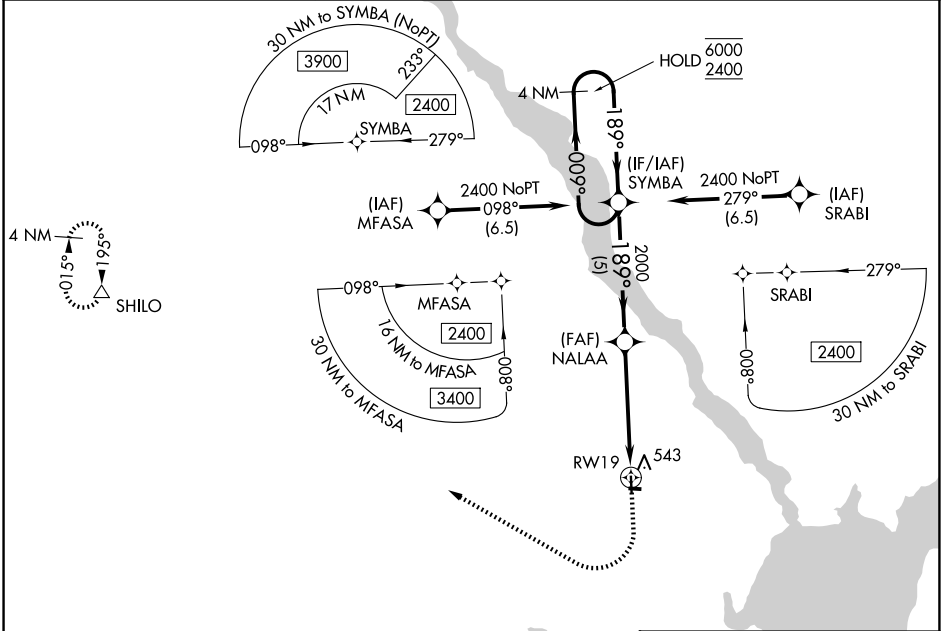


WAAS CH 45847 W19A	APP CRS 189°	Rwy Ldg TDZE Apt Elev	3354 412 412
--	------------------------	-----------------------------	---

RNAV (GPS) RWY 19

HARFORD COUNTY (W3)

RNP APCH - GPS.		MISSED APPROACH: Climb to 1000 then climbing right turn to 3000 direct SHILO and hold.
AWOS-3PT 132.725	POTOMAC APP CON 125.525 291.625	UNICOM 122.8 (CTAF) 0



NE-3, 11 JUN 2026 to 09 JUL 2026

NE-3, 11 JUN 2026 to 09 JUL 2026

4 NM Holding Pattern SYMBA		VGSI and RNAV glidepath not coincident (VGSI Angle 3.25/TCH 42).		1000	3000	SHILO
6000 ← 009°		NALAA		1 NM to RWY19		△
2400 → 189°		2000		3.8 NM		
GP 3.01° TCH 42		2000		1 NM		
		5 NM				
CATEGORY	A	B	C	D		
LPV DA		696-7/8	284 (300-7/8)		NA	
LNAV/VNAV DA		693-7/8	281 (300-7/8)		NA	
LNAV MDA	800-1	388 (400-1)	800-1 1/8	388 (400-1 1/8)	NA	
CIRCLING	860-1 448 (500-1)	880-1 468 (500-1)	880-1 1/2 468 (500-1 1/2)		NA	

