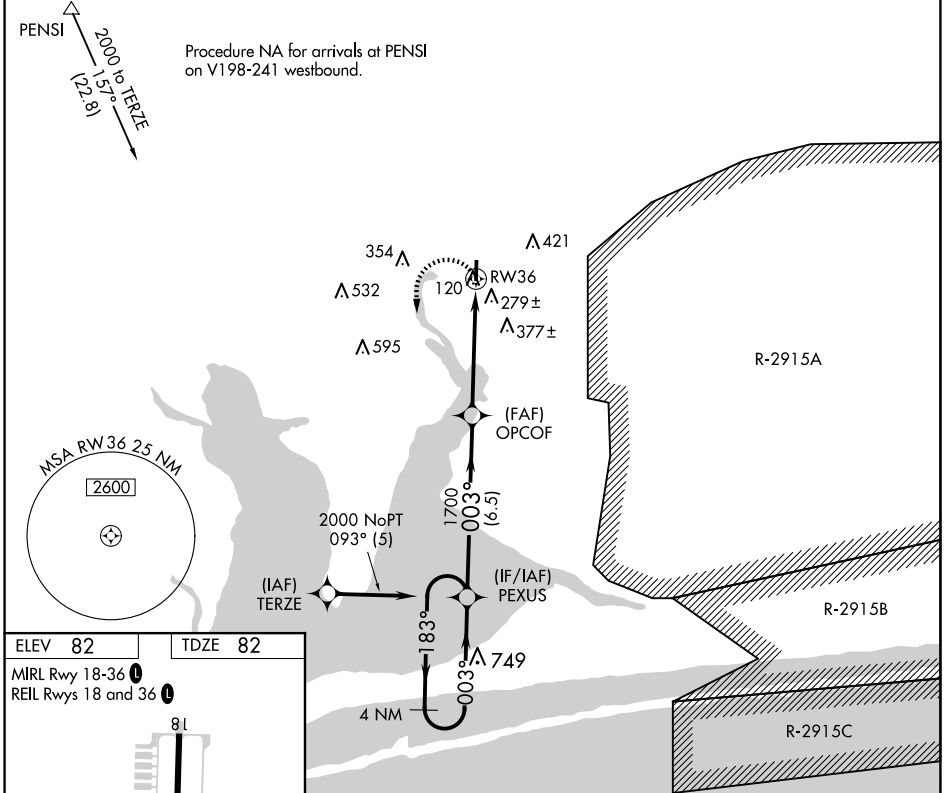


APP CRS	Rwy Idg	3703
003°	TDZE	82
	Apt Elev	82

RNAV (GPS) RWY 36

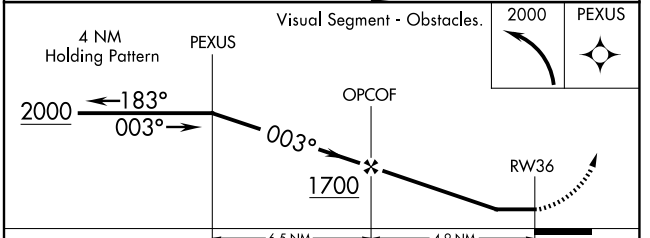
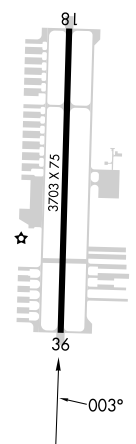
PETER PRINCE FLD (2R4)

RNP APCH.		MISSED APPROACH: Climbing left turn to 2000 direct PEXUS and hold.
<p>▼ Rwy 36 helicopter visibility reduction below 1 SM NA. ▲ NA Use Pensacola Intl altimeter setting; when not received, use Crestview altimeter setting and increase all MDA 40 feet; increase LNAV visibility Cat C ½ SM. Procedure NA at night.</p>		
PENSACOLA APP CON	GCO	AUNICOM
124.85 235.775	121.725	122.975 (CTAF) 1



ELEV 82	TDZE 82
---------	---------

MIRL Rwy 18-36 1
REIL Rwys 18 and 36 1



CATEGORY	A	B	C	D
LNAV MDA	580-1	498 (500-1)	580-1 3/8 498 (500-1 3/8)	NA
CIRCLING	700-1	618 (700-1)	760-2 678 (700-2)	NA

SE-3, 11 JUN 2026 to 09 JUL 2026

SE-3, 11 JUN 2026 to 09 JUL 2026