

RNAV (GPS) RWY 1

VALLE (40G)

APP CRS 008°	Rwy Ldg 4199
	TDZE 5999
	Apt Elev 5999

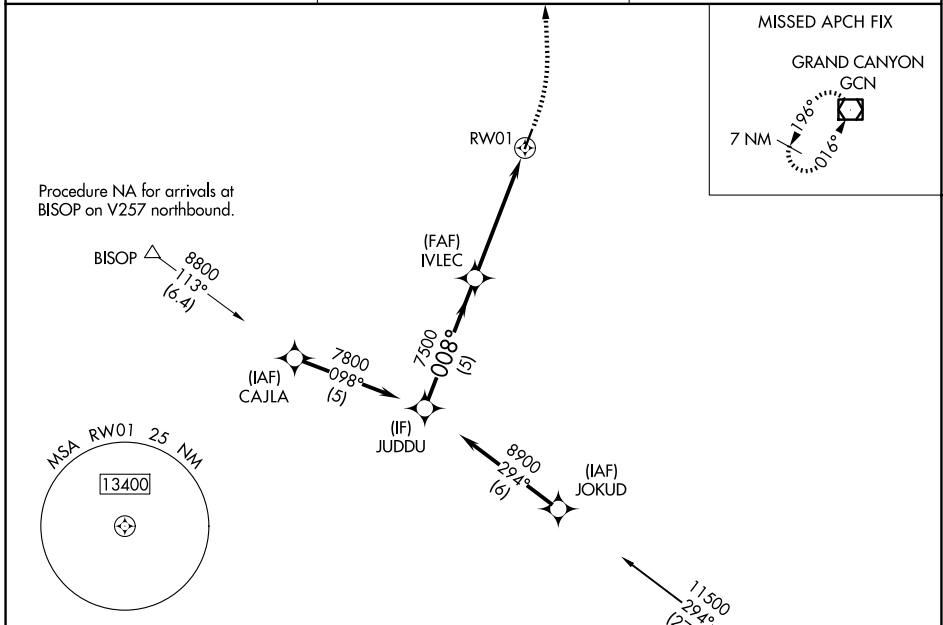
RNP APCH.
 Procedure NA at night. Rwy 1 helicopter visibility reduction below 1 SM NA. Use Grand Canyon Natl Park altimeter setting; when not received, procedure NA.

MISSED APPROACH: Climbing left turn to 10000 direct GCN VOR/DME and hold.

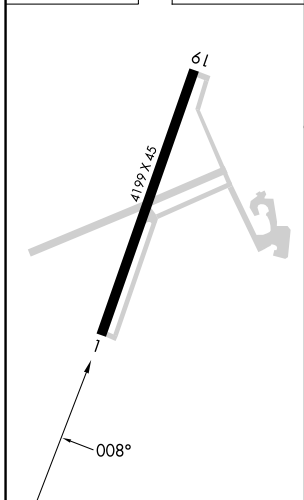
GCN ASOS
124.3

LOS ANGELES CENTER
124.85 319.2

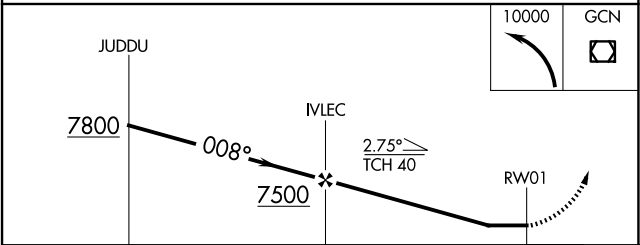
UNICOM
122.8 (CTAF)



ELEV 5999	TDZE 5999
-----------	-----------



Procedure NA for arrival on FLG VOR/DME airway radial 274 eastbound.



CATEGORY	A	B	C	D
LNAV MDA	6620-1	621 (700-1)	6620-1 ³ / ₄ 621 (700-1 ³ / ₄)	NA
CIRCLING	6620-1 621 (700-1)	6640-1 641 (700-1)	6640-1 ³ / ₄ 641 (700-1 ³ / ₄)	NA

SW-4, 11 JUN 2026 to 09 JUL 2026

SW-4, 11 JUN 2026 to 09 JUL 2026