

WAAS CH 48929 W15A	APP CRS 148°	Rwy Idg TDZE Apt Elev	2997 345 345
---------------------------------	------------------------	-----------------------------	---

RNAV (GPS) RWY 15

OXFORD COUNTY RGNL (81B)

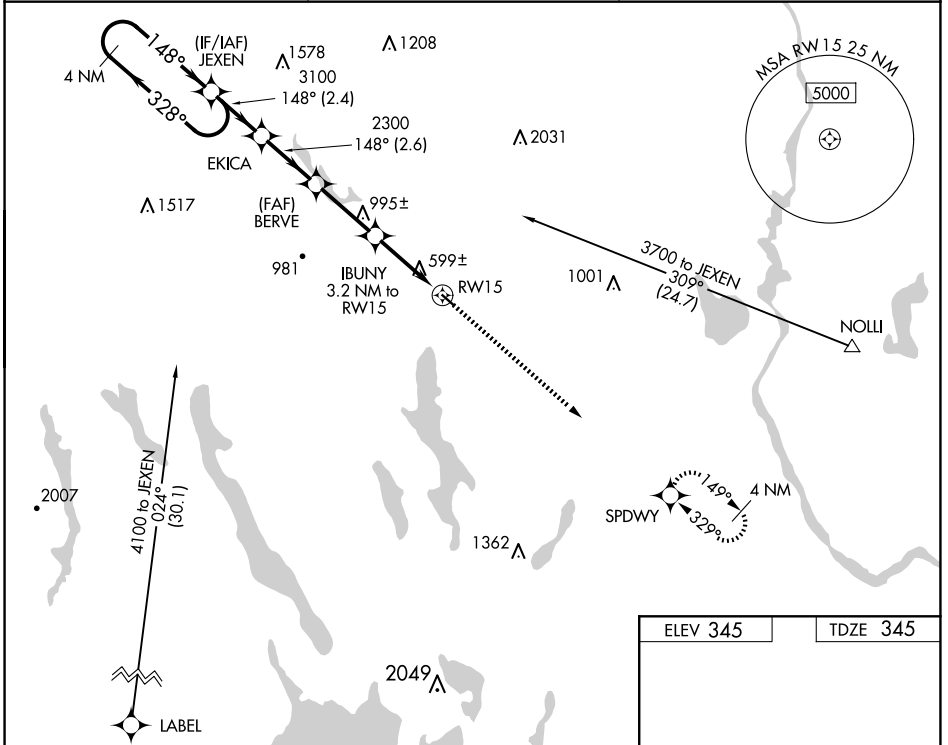
NA DME/DME RNP-0.3 NA. Procedure NA at night. Use Auburn/Lewiston altimeter setting; when not received, use Fryeburg altimeter setting and increase all MDAs 40 feet. Helicopter visibility reduction below 1 SM NA.

MISSED APPROACH: Climb to 3600 direct SPDWY and hold, continue climb-in-hold to 3600.

LEW AWOS-3
118.025

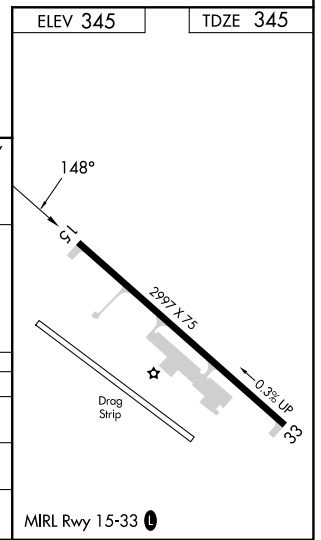
PORTLAND APP CON *
125.5 353.9

UNICOM
122.8 (CTAF)



NE-1, 11 JUN 2026 to 09 JUL 2026

NE-1, 11 JUN 2026 to 09 JUL 2026



CATEGORY	A	B	C	D
LP MDA	900-1	555 (600-1)		NA
LNVA MDA	1140-1 795 (800-1)	1140-1¼ 795 (800-1¼)		NA
CIRCLING	1220-1¼ 875 (900-1¼)	1400-1½ 1055 (1100-1½)		NA