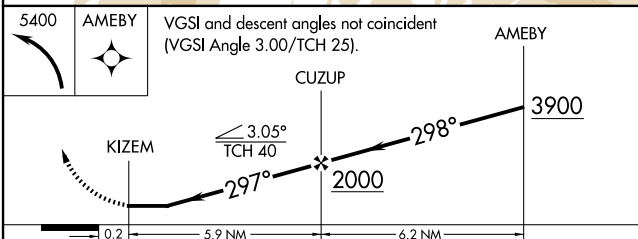
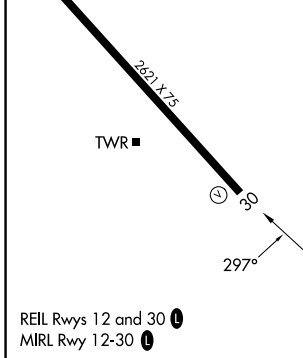
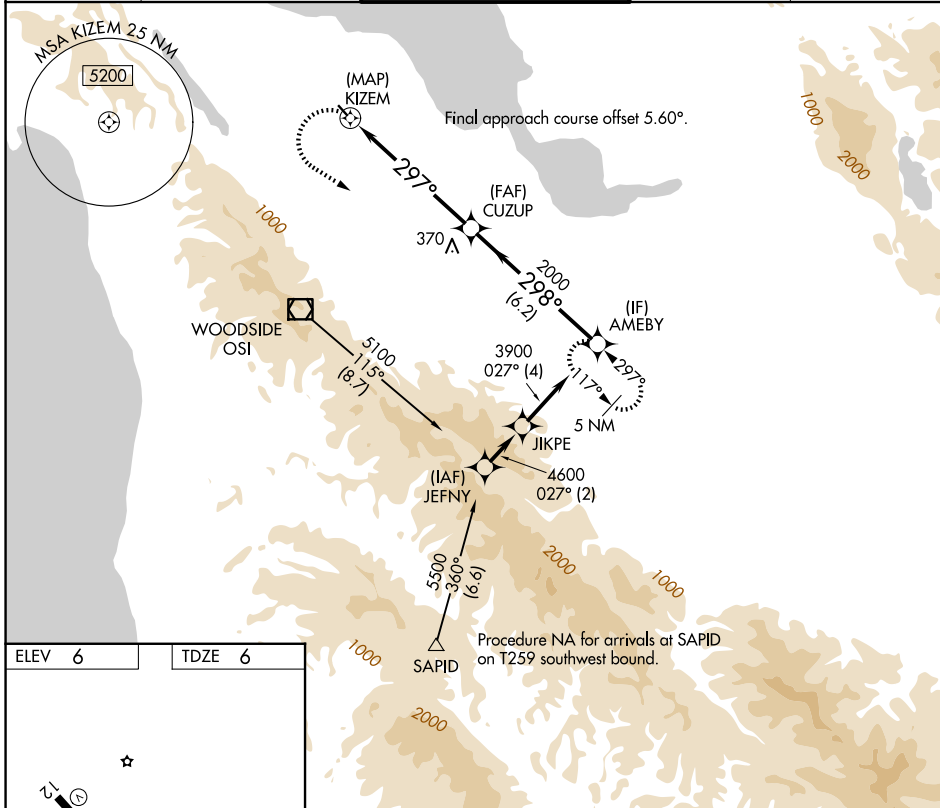


APP CRS <b>297°</b>	Rwy Ldg TDZE Apt Elev	<b>2621</b> <b>6</b> <b>6</b>
------------------------	-----------------------------	-------------------------------------

# RNAV (GPS) Y RWY 30

SAN CARLOS (SQL)

RNP APCH - GPS.			MISSED APPROACH: Climbing left turn to 5400 direct AMEBY and hold, continue climb-in-hold to 5400.	
⚠	When Circling to Rwy 12 at night, operational VGSi required, remain on or above VGSi glidepath until threshold. Rwy 30 helicopter visibility reduction below 1 SM NA. Circling NA west of Rwy 12-30.			
ATIS <b>125.9</b>	NORCAL APP CON <b>133.95 317.6</b>	SAN CARLOS TOWER ★ <b>119.0 (CTAF) 0 326.2</b>	GND CON <b>121.6</b>	UNICOM <b>122.95</b>



CATEGORY	A	B	C	D
LNAV MDA	1260-1¼ 1254 (1300-1¼)	1260-1½ 1254 (1300-1½)		NA
CIRCLING	1260-1¼ 1254 (1300-1¼)	1260-1½ 1254 (1300-1½)		NA

SW-2, 11 JUN 2026 to 09 JUL 2026

SW-2, 11 JUN 2026 to 09 JUL 2026