

APP CRS	Rwy Ldg	2441
322°	TDZE	7
	Apt Elev	7

RNAV (GPS) RWY 31

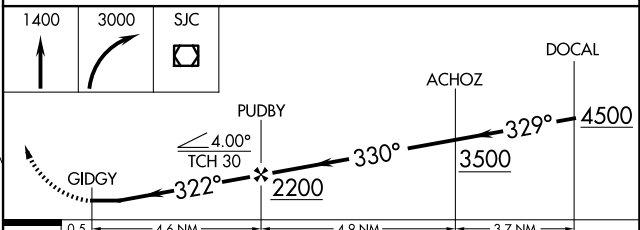
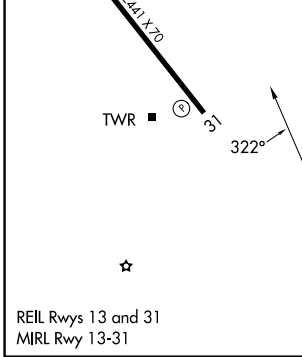
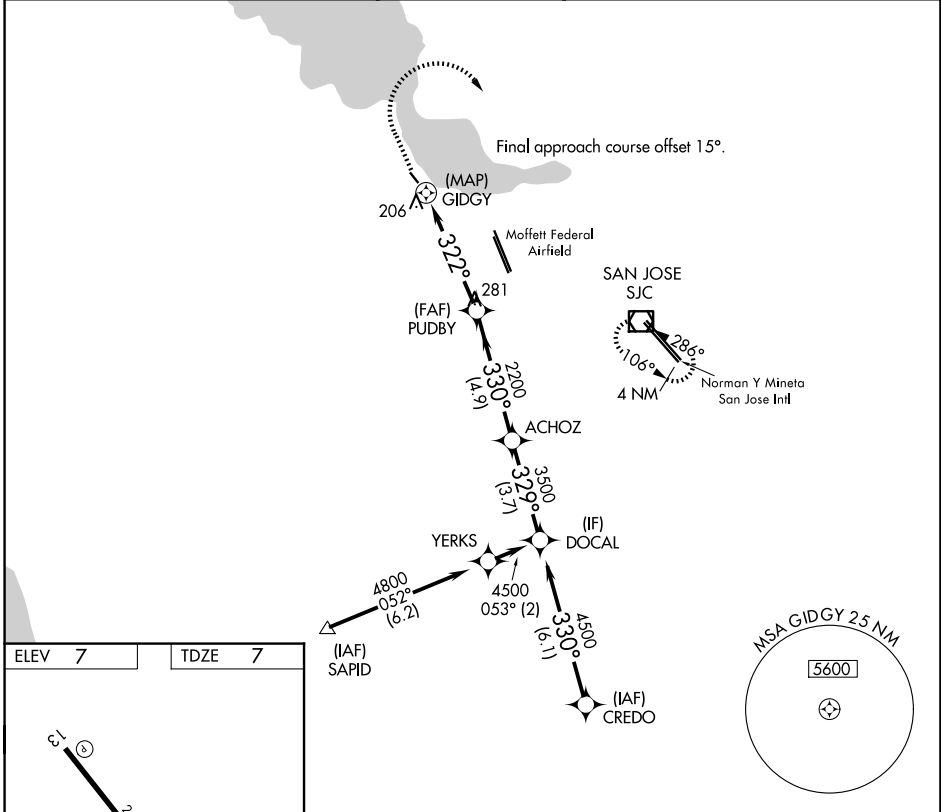
PALO ALTO (PAO)

RNP APCH

▼ Circling NA southwest of Rwy 13-31. Rwy 31 helicopter visibility reduction below 1 SM NA. Procedure NA at night. When control tower closed, use Norman Y Mineta San Jose Intl altimeter setting and increase all MDAs 40 feet.

MISSED APPROACH: Climb to 1400 then climbing right turn to 3000 direct SJC VOR/DME and hold.

ATIS 135.275	NORCAL APP CON 121.3 270.35	PALO ALTO TOWER ★ 118.6 (CTAF)	GND CON 125.0	UNICOM 122.95
------------------------	---------------------------------------	---	-------------------------	-------------------------



0.5	4.6 NM	4.9 NM	3.7 NM
CATEGORY	A	B	C
LNNAV MDA	460-1	453 (500-1)	NA
CIRCLING	460-1 453 (500-1)	520-1 513 (600-1)	NA

SW-2, 11 JUN 2026 to 09 JUL 2026

SW-2, 11 JUN 2026 to 09 JUL 2026